



*The*  
**Complete Works of**  
**WILLIAM**  
**SHAKESPEARE**  
**ABRIDGED**

**By Adam Long, Daniel Singer,  
and Jess Winfield**

**Directed by Ian Gallanar**

**MARCH 6-29, 2020**



**CHESAPEAKE  
SHAKESPEARE  
COMPANY**

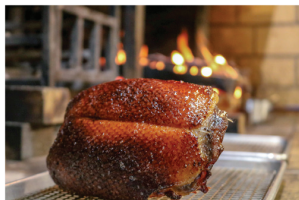
# CHEZ HUGO

206 E Redwood St, Baltimore, MD 21202

Join Chez Hugo and the  
Chesapeake Shakespeare Company  
this season for dinner and a show!



Enjoy our two-course prix fixe menu for \$30 and a complimentary dessert with the purchase of tickets to a CSC production. Avoid the hassle of city parking and take advantage of the complimentary valet services directly in front of the restaurant, available Thursday through Saturday after 5pm (restrictions apply).



For more information,  
call us at 443.438.3002 or email [bonjour@chezhugobistro.com](mailto:bonjour@chezhugobistro.com).

Present this survey to us at the bar at Chez Hugo and enjoy a glass on us!

How do you find out about restaurants in the area? \_\_\_\_\_

What do you typically spend per person when dining out in Baltimore?

- A) Less than \$20    B) \$20-\$35    C) \$35-\$50



# Bach in Baltimore

## FIRST SUNDAY CONCERTS

T. Herbert Dimmock, Founder & Music Director

## The Season of BAROQUE'S GREATEST HITS continues in 2020!

### A HAYDN AFFAIR

**MARCH 1, 2020**

*Heiligmesse, Missa Sancti Bernardi von Offida*  
"Surprise Symphony," Symphony No. 94  
in G major

Towson United Methodist Church  
501 Hampton Lane

### Join us for BACH'S BIRTHDAY PARTY FUNDRAISER at Gertrude's!

**March 19, 2020 | 5 pm – 9 pm**

Celebrate Bach's Birthday with dinner at Gertrude's Chesapeake Kitchen. Up to 20% of the proceeds will be given directly to Bach in Baltimore. Reservations are suggested. Call 410-889-3399.

Gertrude's Chesapeake Kitchen  
10 Art Museum Drive

### OBOE LOVERS' DELIGHT

**APRIL 5, 2020**

Bach's Orchestral Suite No. 1 in C major

Vivaldi's Concerto for two oboes

Albinoni's Concerto for two oboes Op 9, No. 9

Bach's "Air on the G String"

Zion Lutheran Church | 400 E. Lexington St.

### 10TH ANNUAL BACHFEST

**FUNDRAISER**

**APRIL 5, 2020**

The 10th Annual Bachfest Fundraiser directly follows the concert and includes a buffet dinner, an open bar, a raffle, and a silent auction. All proceeds from the raffle and silent auction go directly to support Bach in Baltimore.

**TICKETS:** \$50 per person, all inclusive.

*Tickets for concert and fundraiser are not sold separately.*

Zion Lutheran Church | 400 E. Lexington St.

### B MINOR MASS

**MAY 3, 2020**

Bach's celebrated crown jewel!

Towson United Methodist Church  
501 Hampton Lane

### SUMMER SUNSET

**JUNE 7, 2020**

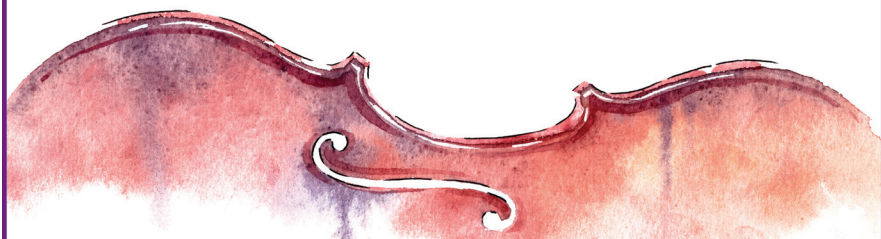
Celebrated works by the Baroque masters – Zelenka, Bach, Handel and Vivaldi!

Church of the Redeemer  
5603 N. Charles Street

**All performances begin at 4:00 p.m.**

For tickets and concert information,  
visit **BachinBaltimore.org** or call **410.941.9262**

Bach in Baltimore is supported by a grant from the Maryland State Arts Council, an agency dedicated to cultivating a vibrant cultural community where the arts thrive. Bach in Baltimore acknowledges the William G. Baker, Jr. Memorial Fund, creator of the Baker Artists Awards, [BakerArtistsAwards.org](http://BakerArtistsAwards.org). Bach in Baltimore is supported in part by grants from the Eddie C. & C Sylvia Brown Family Foundation, Citizens of Baltimore County, Creative Baltimore Fund, Harford County Cultural Arts Board, Howard County Arts Council, Lois & Philip Macht Family Philanthropic Fund, the Peggy & Yale Gordon Trust and Venable Foundation.





Ian Gallanar

# BITING THE HAND THAT FEEDS US

## A Note from CSC's Artistic Director

You know the movie *This Is Spinal Tap*? It's a "mockumentary" film made in the early 80's that satirizes heavy metal bands and documentaries about heavy metal bands. It's terribly funny. One of the things that makes it funny is that the filmmakers clearly know the music and have great affection for it. I think you have to have that when it comes to creating satire. Otherwise, it can come across as mean rather than funny. *The Complete Works of William Shakespeare (Abridged)* was clearly created with great affection for Shakespeare. Its writers obviously have a passion for his works. Without a certain depth of knowledge about Shakespeare and his works, I'm not sure one would even know about *Titus Andronicus*, let alone be able to parody it.

We do too. We have a passion and affection for Shakespeare (so much so we put the word Shakespeare in our name!) That's why it's been so much fun to work on this production. We try to not take ourselves too seriously—although we try and take the work seriously. So, this is a way for us to share with you the quirkiness and wonderful pretentiousness of Shakespeare and his plays.

*The Complete Works of William Shakespeare (Abridged)* has a great appeal to those of us who love Shakespeare, and to those of us, who on occasion, get slightly annoyed with Shakespeare. Sometimes, of course, that can be the same person! Do we find the "Seven Ages of Man" speech to be sublime? Do we think it's beautiful? Check and check. Do we also find the plot devices in Shakespeare's comedies slightly redundant? Also check. That's what this play allows us to do—celebrate Shakespeare and...well, not quite bite the hand that feeds us, but maybe just nibble a bit on that hand.

We've been having great fun playing with the *Complete Works*. I know you will too.

We're glad you're here.

Ian Gallanar,  
Artistic Director



### BOARD OF TRUSTEES

**Laura Boydston**, *President*  
**Robin Hough**, *Vice President*  
**Sean Rhoderick**, *Treasurer*  
**Lesley Malin**, *Secretary*

Kevin G. Burke  
 Kimberly Citizen  
 Joseph Ferlise  
 Neal Flieger

Ian Gallanar  
 Scott Helm  
 Bill Henry  
 Renée Lane-Kunz

Jack McCann  
 Linda Pieplow  
 Earle W. Pratt, III  
 Emily Rockefeller  
 Nan Rohrer



Lesley Malin

## THE PLAY'S THE THING ...

### ***A note from the Managing Director***

Here at the Chesapeake Shakespeare Company, our staff and board are very busy with our first Strategic Plan since we moved into this beautiful theatre in 2014. We're doing a ton of thinking about who we are, what we do, and what we want to do.

It's got me thinking about our audiences—about you.

At a time in which it's so easy to settle into your couch and see a great TV show with fabulous special effects, or sink into your pillow and watch YouTube videos of singing otters on your phone, you chose to get dressed, come downtown (to Downtown Baltimore!) and see a play. Wow! That's kind of amazing.

It's my job to ask you what it is about our shows that you like and don't like, and many of you generously take the time to tell us. It matters to you that our space is warm and comfortable, that our staff is friendly, that our actors say hello after the performances. It's meaningful enough to get you off that seductive sofa.

And who wouldn't have a great time at *The Complete Works of William Shakespeare (Abridged)*? It's so much fun! You're falling out of your seats, laughing—admit it! But you're not just coming for fun times. Last month, there we were at full capacity for Shakespeare's "problem play," *Measure for Measure*. It sure didn't seem to be a problem for our audiences to come here to wrestle with its timeless questions of mercy vs. justice and its #metoo-timely theme of sexual harassment.

Mostly, I think we—you and me and everyone around you today—want to share experiences with other people.

I think we want to laugh and be filled with joy and feel moved by mercy or loss. And I think it's different (better!) when we share those feelings with two hundred other people and with the live artists who are shaping those moments. Our  $\frac{3}{4}$  thrust theatre intensifies that human connection as you watch other folks across the theatre mirroring your emotions.

It's something you sure can't get from your phone.

And without you, we have no reason to do any theatre at all. So, thanks for putting down your phones and spending a couple of hours having fun with all of us. Congratulations on making the choice to be a little more human today.

A handwritten signature in dark ink that reads "Lesley".

Lesley Malin,  
Managing Director

# *The* **Complete Works of** **WILLIAM SHAKESPEARE**

## *Comedies*

All's Well That Ends Well  
As You Like It  
The Comedy of Errors  
Cymbeline  
Love's Labour's Lost  
Measure for Measure  
The Merchant of Venice  
The Merry Wives of Windsor  
A Midsummer Night's Dream  
Much Ado about Nothing  
The Taming of the Shrew  
The Tempest  
Twelfth Night  
The Two Gentlemen of Verona  
The Two Noble Kinsmen  
The Winter's Tale

## *Histories*

Henry IV, Part I  
Henry IV, Part II  
Henry V  
Henry VI, Part I  
Henry VI, Part II  
Henry VI, Part III  
Henry VIII  
King John  
Pericles  
Richard II  
Richard III

## *Tragedies*

Antony and Cleopatra  
Coriolanus  
Hamlet  
Julius Caesar  
King Lear  
Macbeth  
Othello  
Romeo and Juliet  
Timon of Athens  
Titus Andronicus  
Troilus and Cressida

**A LIST**

**COMING THIS SUMMER TO PFI HISTORIC PARK IN ELLICOTT CITY!**

## *Much Ado About Nothing*

By William Shakespeare

**JUNE 19 – JULY 26**

**IN THE RUINS**

**TICKETS ON SALE NOW!**

**ChesapeakeShakespeare.com | 410-244-8570**



**CHESAPEAKE  
SHAKESPEARE  
COMPANY**

**Chesapeake Shakespeare Company**

Ian Gallanar<sup>+</sup> Artistic Director

Lesley Malin<sup>+</sup> Managing Director

# **The Complete Works of William Shakespeare (Abridged)**

**By Adam Long, Daniel Singer, and Jess Winfield**

Originally produced by Reduced Shakespeare Company

**Season Sponsor: BGE**

**Director: Ian Gallanar<sup>+</sup>**

**Assistant Director: Gerrad Alex Taylor<sup>+</sup>**

**Production Manager: Kyle Rudgers<sup>+</sup>**

**Production Stage Manager: Alexis E. Davis<sup>+</sup>**

**Technical Director: Dan O'Brien<sup>+</sup>**

**Scenic Designer: James Kronzer**

**Lighting Designer: Katie McCreary<sup>+</sup>**

**Costume Designer: Matthew Smith<sup>+</sup>**

**Sound Designer: Ian Gallanar<sup>+</sup>**

**SETTING: Present Day**

## **CAST**

Greg Burgess

Elliott Kashner

Matthew R. Wilson<sup>+</sup>

## **ARTISTIC AND CREATIVE TEAM**

Director .....	Ian Gallanar <sup>+</sup>
Assistant Director.....	Gerrad Alex Taylor <sup>+</sup>
Production Manager .....	Kyle Rudgers <sup>+</sup>
Production Stage Manager.....	Alexis E. Davis <sup>+</sup>
Technical Director .....	Dan O'Brien <sup>+</sup>
Scenic Designer .....	James Kronzer
Lighting Designer.....	Katie McCreary <sup>+</sup>
Costume Designer .....	Matthew Smith <sup>+</sup>
Properties Designer .....	Cole Owens
Sound Designer.....	Ian Gallanar <sup>+</sup>
Music Director .....	Grace Srinivasan <sup>+</sup>
Assistant Stage Manager.....	Margaret Warner
Wardrobe Supervisor .....	CJ Arbaugh
Light Board Operator .....	Jonathan Kollin
House Managers .....	Pamela S. Forton <sup>+</sup> , Mary Pohlig <sup>+</sup> , Stacey Morrison

<sup>+</sup>Member of Actors' Equity Association, the Union of Professional Actors and Stage Managers in the United States.

<sup>+</sup>CSC Company Member

There will be one 15-minute intermission.

Videotaping, recording, and photography of any kind are prohibited during the performance.  
After the performance, actors will be available for pictures.

On the Cover: Photography and Graphic Illustration by Brandon W Vernon

## **SPECIAL THANKS**

CSC Volunteers and Ushers, The Studio at the Chesapeake Shakespeare Company, Arrow Parking,  
Bin 604, Chez Hugo, Maryland Public Television, Todd Zimmerman,  
Sam Himmelrich, and Kathyne Daniels.

This performance is supported in part by the Maryland State Arts Council (msac.org).

THE COMPLETE WORKS OF WILLIAM SHAKESPEARE (ABRIDGED) [REVISED] is produced by  
special arrangement with Broadway Play Publishing Inc, NYC [www.broadwayplaypub.com](http://www.broadwayplaypub.com)



**Gregory Burgess**, a member of CSC's Resident Acting Company, has performed in CSC's productions of *Henry IV, Parts 1 & 2*; *The Winter's Tale*; *The Fantasticks*; *Richard III* (2017 and

2012); *Anne of the Thousand Days*; *Wild Oats*; *A Christmas Carol* (2014-2018); *Titus Andronicus* (2015); *The Importance of Being Earnest*; *A Midsummer Night's Dream* (2014 and 2010); *As You Like It*; *The Merry Wives of Windsor*; *The Taming of the Shrew* (2017 and 2013); and *The Merchant of Venice*, among many others. His training includes The Martin Blank Studio, the Shakespeare Theater, and Howard University.



**Elliott Kashner** is a member of CSC's Resident Acting Company, and previously appeared in *She Stoops to Conquer*, *A Christmas Carol*, *Othello*, *Romeo and*

*Juliet*, and *Wild Oats*. Regional credits include *Book of Joseph* (Everyman Theatre). Other local credits include *Junie B. Jones* is *Not a Crook* (Adventure Theatre); *The Burn* (The Hub Theatre; Helen Hayes Nomination: Outstanding Supporting Actor); *Nightfall with Edgar Allen Poe* (Molotov Theatre Group); *Doubt: A Parable* (Quotidian Theatre Company); and *The Misanthrope* and *The Bacchae* (WSC Avant Bard). Elliott is Institutional Giving Manager at Everyman Theatre and holds a Bachelor of Science in Economics. [www.elliottkashner.com](http://www.elliottkashner.com)



**Matthew R. Wilson** returns to CSC having previously directed *Much Ado about Nothing* (2015). He is a two-time Helen Hayes Award winner and seven-time nominee

as an actor, director, playwright, and fight director. Acting credits include

*Swimming with Whales* (1st Stage; Helen Hayes Award Outstanding Lead Actor); *Second Shepherds' Play*, *Comedy of Errors*, and *Henry IV, Part 1* (Folger Theatre); *Comedy of Errors and Scapin!* (Baltimore Shakespeare Festival); *Shear Madness* (Kennedy Center); *Hairspray* and *Pirates of Penzance* (Shenandoah Summer Music Theatre). TV credits include *House of Cards* and *As the World Turns*. Matt teaches at The George Washington University's Corcoran School of the Arts & Design. He holds an MFA from ACA, and a PhD from UMD. [MatthewRWilson.com](http://MatthewRWilson.com)

## CREATIVE TEAM

**Ian Gallanar** (Director) See leadership bio on page 9.

**Gerrad Alex Taylor** (Assistant Director) See staff bio on page 12.

**Kyle Rudgers** (Production Manager) See staff bio on page 11.

**Alexis E. Davis** (CSC Resident Stage Manager, and Production Assistant) See staff bio on page 10.

**Daniel O'Brien** (Technical Director) See staff bio on page 11.

**James Kronzer** (Scenic Designer) calls Washington, DC and Italy home. He is an award-winning scenic designer with credits on Broadway, Off-Broadway, and regionally throughout the United States. He has also designed scenery for Disney Cruise Lines and has shows running on twelve ships on the Norwegian and Regency Cruise Lines. His TV credits include over 170 standup comedy specials for Comedy Central, Showtime, Amazon, and Netflix, as well as shows for the History Channel and Animal Planet. Mr. Kronzer has received eight Helen Hayes Awards (DC) and two Barrymore Awards (Philadelphia). His work can be seen at [www.JamesKronzer.com](http://www.JamesKronzer.com).

**Katie McCreary** (Lighting Designer) as a company member, has designed for

# Bios

CSC's *The Diary of Anne Frank*; *Henry IV, Parts 1 & 2*; *Alice in Wonderland*; *The Winter's Tale*; *The Fantasticks*; *Anne of the Thousand Days*; *Uncle Vanya*; and *The Importance of Being Earnest*. Other recent and favorite designs include *Blight* (Pinky Swear Productions); *[410]Gone* and *A Bid to Save the World* (Rorschach Theatre, company member); *A Midsummer Night's Dream* (WSC/Avant Bard); *Leonard Bernstein's Mass* (Peabody Opera Theatre); and *Hello, My Name Is...* (The Welders). Katie is also Director of Development and Curriculum Development for Educational Theatre Company.

**Matthew Smith** (Costume Designer) is a freelance Costume Designer in Baltimore, MD. Originally from Texas, he was a costume fellow at Baltimore Center Stage and has worked at The Santa Fe Opera and The Glimmerglass Festival. He served as Costume Designer on *The Complete Works of William Shakespeare (Abridged)* (Chesapeake Shakespeare Company); *Love and Information* (Loyola University); *Young Playwright's Festival 2016-2019* (Baltimore Center Stage); and *Peter Pan: Wendy, Peter, Peter, Wendy*. (Single Carrot Theatre); and as Assistant Costume Designer on *Love's Labour's Lost* and *The Winter's Tale* (Chesapeake Shakespeare Company). [www.matthewglensmith.com](http://www.matthewglensmith.com)

**Cole Owens** (Properties Designer) is returning to CSC after designing props for *Measure for Measure*. Previously, they served as properties designer for the Levine School of Music production of *Matilda*. They recently graduated from McDaniel College with specializations in properties and costume design.

**Grace Srinivasan** (CSC Resident Music Director) has directed the music for many CSC productions including *Measure for Measure* (2020), *Dracula* (2019); *She Stoops to Conquer*; *Henry IV, Parts 1 & 2*; *A Christmas Carol* (2017-2019); and *A Midsummer Night's Dream*. A soprano who performs a wide-ranging repertoire throughout the region, she has appeared as a soloist in a program of works inspired by Shakespeare's plays, *If Music Be*

*the Food of Love*, with CSC artists, the Peabody Baroque Band, and the Peabody Renaissance Ensemble. Grace holds a master's degree in vocal performance from the Peabody Conservatory and sings professionally at St. Stephen Martyr Church and the National Cathedral. [www.gracesrinivasan.com](http://www.gracesrinivasan.com)

**Margaret Warner** (Assistant Stage Manager) is excited to be returning to Chesapeake Shakespeare Company after working on *A Christmas Carol* as the Assistant Stage Manager. Margaret is a recent graduate from the University of Maryland with a BA in Theatre. Credits include *Kid Prince and Pablo* (Production Assistant), *The REACH Opening Festival* (Assistant Stage Manager) at the Kennedy Center; *Henry V* (Assistant Stage Manager) at Delaware Shakespeare.

**CJ Arbaugh** (Wardrobe Supervisor) is excited to return for another year with CSC after joining for *Romeo and Juliet* and *A Christmas Carol* in 2019 and returning for *Measure for Measure* in 2020. They graduated with a degree in theatre design and production from UMBC in 2018.

**Jonathan Kollin** (Light Board Operator) Jonathan has been CSC's Light Board Operator going on three years. As a third occupation after retiring from a career in business, he enjoys his job and his part in CSC's creativity and professionalism.

## LEADERSHIP

**Ian Gallanar** (Artistic Director) In addition to founding the Chesapeake Shakespeare Company in 2002, Ian has worked as a professional actor, director, and writer for more than 150 professional productions. He has directed 40 productions for CSC. Previously, Ian has served as Artistic Director for the National Theatre for Children, Minnesota Shakespeare in the Park, and the Repertory Theater of America. Ian is a proud member of the distinguished National Theatre Conference and the Dramatists Guild of America; a

# Bios

Helen Hayes Tribute Award, Telly Award, and Howie Award (Howard County Arts Council) winner. He is the recipient of the Distinguished Alumni Award from Indiana University of Pennsylvania, where he is a Member of the College of Fine Arts Advancement Council. He is President of the international Shakespeare Theatre Association, an organization for professional Shakespeare companies around the globe.

**Lesley Malin** (Managing Director) is a founder of the Chesapeake Shakespeare Company, and has served as its Managing Director since 2003. She managed CSC's building renovation of an 1885 bank into our modern Shakespeare playhouse as well as the associated \$6.7 million capital campaign. She has performed in 28 CSC productions and previously in New York. She has, for 20 years, been Vice President of the Board of Trustees of The Lark, a new play development center in New York City, where she earlier was Managing Director. She served for five years on the Executive Committee of the international Shakespeare Theatre Association and organized its annual conference that CSC hosted in Baltimore in 2017. She is a graduate of Washington University in St. Louis, NYU's Arts Management program, Leadership Howard County, and LEADERship Baltimore (2018).

## STAFF

**Elizabeth Berman** (Finance Manager and Development Manager) holds a Master of Arts degree in Arts Administration from Goucher College and two bachelor's degrees from Johns Hopkins University. Liz is a classically trained musician who serves as the Principal Oboist of the Columbia Orchestra. She has been with CSC since 2012.

**Pamela Burns** (Education Coordinator) has trained students in medical billing, coding, and electronic medicine records. In addition, she has experience as an Accounts Receivables Manager for the University of Maryland, Faculty Physicians in Baltimore, and as a Programmer/Analyst/Trainer and Instructional

Designer for JHU Health Systems. She co-founded Freedom Road Productions, Inc, a concert series presenting music and workshops to audiences of all ages and the Susquehanna Music and Arts Festival. Her new project is Closer to the Heart Productions, which plans retreats and workshops.

**Jane Coffey** (Director of Development) is a business development, sales and IT professional who has worked in the banking, staffing, IT, and renewable energy industries, most recently with Microsoft and Clean Choice Energy. Jane has served on the Board of Trustees for Arts Education Alliance of Maryland (AEMS) since 2017. She served on the Board of Trustees of Chesapeake Shakespeare Company from 2006 to 2015, and for several years was its president. She is an ardent supporter of the arts in Baltimore. Her husband is the professional musician and song writer Arty Hill and her daughter, Josie, is an animation artist-in-training at the Columbus College of Art and Design.

**Alexis E. Davis** (CSC Resident Stage Manager and Production Assistant) was the Stage Manager for CSC's *Dracula*; *Henry IV, Parts 1 & 2*; *She Stoops to Conquer*; *Alice in Wonderland*; *Romeo and Juliet* (student matinees: 2016-2019); *Red Velvet*; *A Christmas Carol* (2017 - 2019); *Julius Caesar*; *The Fantasticks*; and *Othello*; and Assistant Stage Manager for *A Christmas Carol* (2016). At Single Carrot, she was Stage Manager for *A Beginner's Guide to Deicide* and *Drunk Enough to Say I Love You*. With Everyman Theatre she was Assistant Stage Manager for *By the Way, Meet Vera Stark*; stage crew for *TopDog/Underdog*; and Stage Management Intern for *God of Carnage*. She was also a Stage Management intern for *Wild! With Happy!* at Baltimore Center Stage. She holds a bachelor's degree in Theater Production from McDaniel College.

**Pamela S. Forton** (Senior House Manager) supports the Box Office and coordinates many of the front-of-house and patron services that make audiences feel welcome in our beautiful theater.

**Stephen Gearhart** (Audience Services

# Bios

Manager) has worked at various arts and cultural non-profits over the years, in positions including box office manager at Arena Stage in Washington, DC. He has worked in the Department of Institutional Advancement at the Enoch Pratt Free Library here in Baltimore, and at other theatrical venues, including the Baltimore Opera Company and the Olney Theatre Center. He spent seven years working with wine at the Cellars of McHenry Row before joining Chesapeake Shakespeare Company.

**Ron Heneghan** (Director of Education) oversees education programs for CSC. More than 13,000 students attended performances in the 2018-2019 student matinee program, while the in-school residency, where CSC Teaching Artists embed in English/Language Arts classrooms as a resource for teachers and a learning experience for their students, served more than 2,500 students in Baltimore City, Baltimore, Anne Arundel, and Howard Counties. Ron is a member of the CSC Resident Acting Company and a member of Actors' Equity Association. He holds an MFA from the University of Washington and a BS from the University of Maryland.

**Kristina Lambdin** (Resident Costume Designer and Business Manager) won the Broadway World Best Costume Design award for her designs for *A Christmas Carol* (2016). Some of her costuming credits with CSC include *Dracula* (2013 and 2019); *The Diary of Anne Frank*; *She Stoops to Conquer*; *Alice in Wonderland*; *Red Velvet*; *Anne of the Thousand Days*; *The Fantasticks*; *Macbeth* (2016); *A Christmas Carol* (2014-2018); *A Midsummer Night's Dream* (2005, 2011 and 2014); *The Importance of Being Earnest*; *The Taming of the Shrew* (2006 and 2013); *Romeo and Juliet* (2003, 2012, and student matinees 2015-2019); *A Doll's House*; *As You Like It* (Broadway World Best of Baltimore Award); and *The Country Wife*. Broadway World named her as a top artist of the 2007 Baltimore Theatre, and she won the Greater Baltimore Theater Award for *A Midsummer Night's Dream* (2005). For more than a decade, she served as the Costume Supervisor for the Baltimore

Opera Company and then Lyric Opera Baltimore.

**Anna Mills Russell** (Director of Marketing and Communications) has worked for over 15 years in the performing arts as an administrator. She held various positions in marketing, communications, and audience development at Round House Theatre, Arena Stage, Virginia Opera, Shakespeare Theatre Company, and Washington National Opera. She holds an M.A. in Arts Administration from Goucher College.

**Russell Laury** (Porter) worked with Southway Builders on the transformation of our landmark building into this beautiful theater before joining the CSC staff.

**Michael Lonegro** (Information Systems Manager and Development Associate) was the lighting designer for CSC's *Julius Caesar* (2017) and has operated lighting for numerous CSC productions. He is a member of the Resident Technical and Design Company. Before joining CSC in 2014, he studied law at the University of Maryland and comparative literature at the University of Chicago and worked for 10 years as a university press editor. He holds a BA from Yale University, where he also designed lighting for undergraduate and graduate theatre productions.

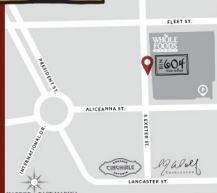
**Daniel O'Brien** (Resident Technical Director and Facilities Manager) is a founding member of CSC. Daniel has performed, designed scenery, lights, and served as Technical Director for many productions (among other jobs too numerous to name). He oversaw the construction of CSC's theatre in Baltimore and designed the sets and lighting for *Macbeth* (2016); for the inaugural season plays *A Midsummer Night's Dream* and *Richard II*; *Romeo and Juliet* (2015-2019); *A Christmas Carol* (2014-2019), and many others.

**Talani Richardson** (Box Office and Group Sales Associate) previously worked as Box Office and House Manager for Baltimore Theatre Project, a non-profit community theatre. She is an art therapy group instructor at Kennedy Krieger's Center for Child and Family Traumatic Stress.



## Wine, Beer & Spirits

Open 7 Days a Week  
Tastings & Classes  
Next to Whole Foods



(410) 576-0444 • bin604.com • 604 S. Exeter St.

## Thank You

*High sparks of honor in thee have I seen.*  
- Richard II

Season 2019-2020 is presented by



An Exelon Company

Additional Sponsors and Funders Include



THE CITIZENS OF  
BALTIMORE COUNTY

T.RowePrice®  
INVEST WITH CONFIDENCE

TRUSTEES  
T. ROWE PRICE  
FOUNDATION, INC.

Education Partners and Acknowledgments

Morgan State University  
High Point University  
Vet Arts Connect  
Institute for Integrative Health  
Creative Forces®: NEA Military Healing Arts Network  
Howard County Public School System

## Bios

**Kyle Rudgers** (Resident Production Manager) holds a BA from William and Mary and an MFA in Stage Management from UC San Diego. As a production manager, he has worked at the Atlas Performing Arts Center, the Washington Performing Arts Society, and in a similar capacity at the Clarice Smith Performing Arts Center. As a stage manager, he has worked at theaters in Boston, Los Angeles, San Diego, and Singapore.

**Gerrad Alex Taylor** (Director of The Studio at CSC) directed *Dracula* (2019); *A Christmas Carol* (2018); and *A Midsummer Night's Dream* (2018), and co-directed *Henry IV, Part 2* (2019) for CSC. He oversees all programming in The Studio at the Chesapeake Shakespeare Company, which offers classes year-round for area youth and adults. Gerrad also teaches in the theatre departments at UMBC and George Washington University. He holds a BA in Neuroscience from The Johns Hopkins University and an MFA in Performance from the University of Nevada, Las Vegas. He is a member of CSC's Resident Acting Company, and has worked as an actor, director, and educator for theaters and educational institutions across the country including the Great River Shakespeare Festival, Shakespeare Festival St. Louis, Pacific Conservatory Theatre-PCPA, Everyman Theatre, Constellation Theatre Company, Washington Stage Guild, and the Children's Theatre of Annapolis. He is a member of the Actors' Equity Association.

**Brandon W Vernon** (Marketing Manager and Graphic Designer) is an animator, illustrator, and graphic designer who has worked for numerous publications and theaters including the Williamstown Theatre Festival in Massachusetts. He served as the Dramaturg for *Dracula* (2019). He holds an MFA in Visual Communication from Jacksonville State University in Alabama, and a BFA in Traditional Animation from the School of Visual Arts in New York. He has designed for theatre, film, television, and has been a featured artist on MTV.com.

# Artistic Programming, Education, and Operations Donors

A theater is so much more than a building. It is a living, breathing community where audiences and actors meet to create art that enlightens, inspires, transforms, awes, and entertains. We are grateful for your gifts that support this artistry, our outreach and education programs, and our operations. This list recognizes gifts of \$100 and greater, received as of February 21, 2020.

## The FRIENDS of Chesapeake Shakespeare Company

### Benefactor (\$5,000+)

Tom and Nancy Brandt  
C. Sylvia and Eddie C. Brown  
Louise Cather  
Robert and Gladys Helm  
Scott Helm  
Charlton and Patrick Hughes  
Bob Lienhardt† and Barbara Leons  
Lesley Malin  
Jeanne E. Marsh  
Bob and Deeley Middleton  
Mary and James Miller  
Emily and John D. Rockefeller, V  
David Warnock and Michele Speaks  
Ted and Mary Jo Wiese

### Patron (\$2,500–\$4,999)

Anonymous  
Laura Boydston  
Patricia L. Delk-Mercer  
and Raymond Mercer  
Edward and Nanci Feltham  
Joseph Ferlise  
The Flieger Family

Ruby and Bob Hearn  
Eva P. Higgins  
Robin and Don Hough  
Renée Lane-Kunz  
Richard Ley  
Jack and Donna McCann  
Wally and Brenda Stone  
Paul and Chandler Tagliabue, *in honor of Emily Rockefeller*

### Friend (\$1,000–\$2,499)

Anonymous (3)  
*Anonymous, in memory of Barry Neal Ochrach*  
Steve Beall and Carmel Roques  
Mr. and Mrs. A. Stanley Brager, Jr.  
Kevin G. and Susan A. Burke  
Virginia Tyler Campbell  
Kim Citizen and Biffrey Braxton  
Bryan and Pamela Crockett  
Jeffrey and Carolyn Crooks  
Jane Eisner  
John Clinton Eisner and Jennifer Dorr White  
The Epp Family  
Ian Gallanar and Maria Trujillo  
Mr. and Mrs. Jesse Gardner  
Judith Golding and Robert Brager

Carole and Scott Greenhaus  
Marie Hartman  
Heneghan Family Fund  
Bill and Ruth Henry  
Nick and Cynthia Islin  
Chris and Mary Ellen Kiehne  
Dr. and Mrs. Stephen Malin  
Tom and Janet McGlynn  
Frank B. and Mary Ellen Moorman  
Kevin and Joyce Parks  
Rev. Patricia Payne  
Linda and Jeff Pieplow  
Walter and Mary-Ann Pinkard  
Mark and Joanne Pollak  
Mr. Earle Pratt and Dr. Kelly Emerson  
Kyoko and Steve Redd  
Sean Rhoderick and Ana Kornegay  
Nan Rohrer  
Sharon and Michael Runge  
Scott and Sharon Stewart  
George and Holly Stone  
Michael P. and Joanna Sullivan  
Doris Sweet  
Penny Thompson and Charlie Riesz

### Player (\$500–\$999)

Anonymous (2)  
Isabelle Anderson  
Elizabeth and Ira Berman  
Richard Berndt

Paulette Bowles  
Sherilyn Brinkley and Jeff Brotman  
Donna Lee Burke  
Glenn and Sandy Campbell  
Glenn and Renate Charlow  
Yara Cheikh and Firmin DeBrabander  
Ernie and Linda Czryca  
Dana DiCarlo  
Jonathan Dubin  
Dennis Gallagher and Carol Barthel  
Frank Gannon  
Glen R. Goodwin and Dr. Jennifer Cooper  
Mark A. G. Huffman  
Matthew Imholte  
Tim and Jennifer Kingston  
Vivian and Robert Manekin  
Suzan and Alex Mecinski  
Monica Nicolau  
Lee and Marilyn Ogburn  
Fred and Grazina Pearson  
Mary Ann and Chuck Scully  
Julie Suman and Mark Toohy  
Michele and Ed Swing  
Patrick Tarwater  
Cathy Tipper  
Khahn Ung and Dana Tharrett  
Marguerite VillaSanta  
† Deceased

## Corporate, Foundation, and Government Support

### \$100,000+

Bloomberg Philanthropies  
The France-Merrick Foundation  
The Helm Foundation  
State of Maryland  
Maryland State Arts Council

### \$25,000–\$99,999

The Abell Foundation  
Paul M. Angell Family Foundation  
The William G. Baker, Jr. Memorial Fund, creator of the Baker Artist Portfolios, [www.Bakerartist.org](http://www.Bakerartist.org)  
Ensign C. Markland Kelly, Jr. Memorial Foundation  
Middendorf Foundation

### Shakespeare in American

Communities: National Endowment for the Arts in partnership with Arts Midwest

### \$10,000–\$24,999

The Herbert Bearman Foundation BGE  
The Jacob and Hilda Blaustein Foundation  
Howard County Arts Council, through a grant from Howard County Government  
The John J. Leidy Foundation  
PNC Bank  
The Sheridan Foundation  
T. Rowe Price Foundation  
The Wells Fargo Foundation

### \$5,000–\$9,999

The Arts Insurance Program, LLC  
Baltimore County Commission on Arts and Sciences and the citizens of Baltimore County  
Baltimore National Heritage Area  
Mayor Bernard C. "Jack" Young and the Baltimore Office of Promotion and the Arts  
Caroline Fredericka Holdship Charitable Trust, through the PNC Charitable Trusts Grant Review Committee  
The Morris A. and Clarisse Mechanic Foundation  
The Sylvia Meisenberg Endowment for Shakespeare Education

### \$100–\$4,999

Anonymous  
Applied Development LLC  
The Campbell Foundation  
CE Science Inc.  
Howard Bank  
The M&T Charitable Foundation  
The Macht Philanthropic Fund of The Associated  
Dr. Frank C. Marino Foundation  
Miles & Stockbridge Foundation  
Quinn Evans  
The Nora Roberts Foundation  
Southway Builders, Inc.

## Individual Donors

### Mechanicals

Anonymous  
Michael and Teri Bennett  
Elizabeth and Ira Berman  
Jean Waller Brune  
Donna Lee Burke  
Kim Citizen and Biffrey  
Braxton  
Pamela Forton  
Kristen Vanneman-Gooding  
and Ira Gooding  
Susan K. Goodman  
Steven Hoochuk  
Mark A. G. Huffman  
The Klipp-Lischner Family  
The La Count Family  
Michael Lonegro  
Mr. Lou Nolan and Ms.  
Korrina Nolan  
Brian and Barbara Scheetz  
Curtis Tatum  
Jenny Wright and Josh  
Osborne

### \$250 - \$499

Anonymous (5)  
The Babji Family  
Dr. Murry Bentley and Ms.  
Linda Clark  
Susan Betso and Carol Clark  
Barbara and Thomas Bozzuto  
David Brown  
Jean Waller Brune  
Bob Burke and Helen  
Blumberg  
Mike and Elsa Cain  
Jeffrey and Elaine Christ  
The Courtesan  
Miranda Dover  
Chris and Mary Alane Downs  
Jim Eisner  
Charles Fertsch  
Robert and Jennifer  
Feuerbach  
Ashly Fishell  
Bruce and Lindsay Fleming  
Kevin and Sherry Frick  
Mr. and Mrs. William H.  
Gregory, in loving memory  
of their grandson, Gregory  
David Cooke  
Forrest and Cynthia Hall  
Barbara and Sam Himmelrich  
Pam and Sam Himmelrich, Jr.  
Jonathan Katz and Teri  
Moreland  
The Klipp-Lischner Family  
Ben Kramer  
Kim Leisey  
Alison and Laddie Levy  
Tom and Fran Lonegro  
Darren McGregor  
Friends of Matthew  
Nayden—Litigation,  
in memory of James F.  
Nayden  
Bodil Bang Ottesen  
William and Nancy  
Paternotte  
Alan Penczek  
Keven Perkins and Christine  
Bordine  
Tuckie Pillar  
Susan H. Pratt  
Barbie and James Prince  
Erin and Steven Prumo

Dr. Tedine Ranich  
Keenan and Natasha Rice  
Sarah S. Robinson  
Brian and Barbara Scheetz  
Mary Shock  
Mr. and Mrs. David Smith  
David and Treva Stack  
Carolann and Brian Stansky  
Emil and Shauna Sueck  
Andrew Tagliabue and Mark  
Jones, in honor of Emily  
Rockefeller  
Mary Tooley  
Lorraine and Leon Ukens  
Mitch, Mary, Melanie, and  
Danielle Vitullo  
Eric Walker  
Dale Woodring  
Jenny Wright and Josh  
Osborne  
Marylou Yam

### \$100 - \$249

Anonymous (7)  
Anonymous, in memory of  
Gregory David Cooke  
Anne Agee  
Charley Albert, in honor of  
Lizzi Albert  
Paul and Irene Aldridge  
The Allemen Family  
Clifford Amend  
Tamara Anderson  
Teresa Audia  
Franklyn Baker  
Linda Ballietta  
Richard and Kathleen Baum  
Edward and Ellen Bernard  
Leslie and Hugh Bethell  
Lea Billingslea  
David Bobart  
Douglas Borg  
David Nelson Bradford  
Stephen and Lori Bruun  
Maureen Capps  
Michael Carducci  
Sue and Drew Carlson  
Caslow Family  
Ing-Jye Cheng, Stephen  
Schenkel and Family  
Jane Coffey and Arthur  
Renkowitz  
Alan and Deborah Cohen  
Janet and Sean Coleman  
Robert Connors and Jonas  
David Grey  
David and Sara Cooke  
Randall Cover  
Rae and Jim Cumbie  
Grace and Frank  
Cunningham  
The Curtis Family  
Marty and Debbie Disney  
Tim Dugan  
David and Marian Entin  
Karen and Dave Eske  
Marcy Feeney and Mark  
Klotzbach  
Lois Feig  
Valerie Fenton and Chris  
Niebling  
Bruce and Lisa Field  
The Fletcher-Hill Family  
Deborah Ford  
Pamela Forton  
Jim Fritsch

Jacquelyn Galke  
Judy Gibson  
Tom and Jeanne Gildee  
Gil and Terry Gleim  
Kristen Vanneman-Gooding  
and Ira Gooding  
Susan K. Goodman  
Michael and Colleen Gottlieb  
Caroline Griffin and Henry E.  
Dugan, Jr.  
Jose Guzman  
Susan Hahn  
Lorraine E. Harding  
Mr. and Mrs. Stephen G.  
Heaver  
Rabbi Joanne and Dr. Gary  
Heilgman  
Ralph and Beth Heimlich  
Lal Heneghan  
Lily Hill, in honor of Will  
Fletcher-Hill  
Terri Hodes  
Kathy Hogue and Nick  
Sommese  
Steven Hoochuk  
Wayne Hunt and Jan Staples  
Marc and Carolyn Hurwitz  
Deeba Jafri  
Patricia Jonas  
The Joseph Family  
Brian Kantsiper  
Eric and Hattie Katkow  
Felicia Korengel  
Barbara Kornblatt, in  
memory of David  
Kornblatt  
Zach Kung  
The La Count Family  
Yolan and Ann Laporte  
Michael Lasinski  
Frank G. Lemoine  
John and Carrie Leovy  
Jill and Aaron Levin  
Brooke Lierman and Eben  
Hansel  
Michael Lonegro  
Billie Luper  
Joseph N. Mariano  
Ganesha Martin  
Sara Marie Massee, in  
memory of Tina Blevins  
Judy and David Mauriello  
Emily Mendenhall  
Kavita and Sandor Mester  
Robin Miller  
Molly Moores  
Christina Morganti  
Ken Moss and Patryce Toye  
Charles and Rosemary  
Mountain  
Jennifer C. Munch  
Dr. and Mrs. Michael S.  
Murphy  
Janet and Douglas Neilson  
David Neubauer  
Mr. Lou Nolan and Ms.  
Korrina Nolan  
Mary North  
Thomas L. and Leslie V.  
Owsley  
David Pace  
James Passarelli  
Rebecca Pearlman and Peter  
Evans  
Tamara S. Plant  
Kelvin Pollard  
Anne and Jim Porterfield

Robert E. Pownall  
Julie Press  
Rebecca Ranich  
Paula and Charles Rees  
Mr. and Mrs. Arthur  
Renkowitz, Sr.  
Pat and Stasia Reynolds, in  
honor of William R. Stott, Jr.  
Nicole Ripken and Family  
Maureen Roberts  
Lori and Renee Rocheleau  
Mr. and Mrs. Scott Rodgville  
Donald Ross  
Susan Rucker  
Richard and Kayleen Saucier  
Alice Schreiber  
Courtney Semmes  
Judy Sheldon and Chris  
Gorman  
Patricia E. Smeton  
Dr. Thomas Smith  
F. Louise and Wayne F. Smith  
Florence Solonche  
Jeffrey Sterrette  
Margaret Sullivan  
David and Irene Tabish  
Curtis Tatum  
Michael Terrin and Bess Keller  
The Thompson Family, in  
memory of Alva "Dolly"  
Griffith  
Carl Vanderweyden  
The Velapoldi Family  
Frank Vitrano  
Charles Emerson Walker  
Danielle Walter-Davis  
Michael Wentworth  
Karen Wessel  
Kem and Susan White  
Suellen Wideman and  
Virginia Shimak  
Nadya Workman  
Donna and Susan Zagar  
Mr. and Mrs. H. Ronald Zielke

### Matching Gift and Employee Giving Programs

Exelon Foundation  
The Robert Wood Johnson  
Foundation  
Macy's Foundation  
Maryland Charity Campaign  
T. Rowe Price Program for  
Charitable Giving  
United Way of Central  
Maryland

### In-Kind Support

The Afro-American  
Newspapers  
Bach in Baltimore  
Baltimore Jewish Times  
Baltimore Style  
The Beacon  
Bin 604  
Charm City Meadworks  
Maryland Public Television  
Miles & Stockbridge P.C.  
Oculus VR / Facebook  
Technologies, LLC

# CHESAPEAKE SHAKESPEARE COMPANY

## STAFF

**Ian Gallanar**, Artistic Director  
**Lesley Malin**, Managing Director  
**Kyle Rudgers**, Production Manager  
**Jane Coffey**, Development Director  
**Anna Mills Russell**, Director of Marketing and Communications  
**Elizabeth Beraman**, Finance and Development Manager  
**Daniel O'Brien**, Technical Director and Facilities Manager  
**Ron Heneghan**, Director of Education  
**Gerrad Alex Taylor**, Director, The Studio  
**Pam Burns**, Education Coordinator  
**Kristina Lambdin**, Business Manager  
**Stephen Gearhart**, Audience Services Manager  
**Pamela Forton**, Senior House Manager  
**Talani Richardson**, Box Office Associate and Group Sales Associate  
**Michael Lonegro**, Information Systems Manager and Development Associate  
**Alexis E. Davis**, Resident Stage Manager  
**Brandon W Vernon**, Marketing Manager and Graphic Designer  
**Russell Laury**, Porter

## OUR CREATIVE MEDIA TEAM

**Brandon W Vernon**, Graphic Design  
**Todd M. Zimmerman**, Program Layout  
**Molly Moores**, Program Advertising

## ASSOCIATE ARTISTIC DIRECTORS

**Scott Alan Small**  
**Gerrad Alex Taylor**

## RESIDENT ARTISTS

**Isabelle Anderson**, Distinguished Artist in Residence  
**Kevin Costa**, Educator in Residence  
**Kristina Lambdin**, Resident Costume Designer  
**Nellie K. Glover**, Resident Dance Choreographer  
**Grace Srinivasan**, Resident Music Director

## TEACHING ARTISTS

**Tamieka Chavis**  
**Lauren Davis**  
**Kathryne Daniels**  
**Abigail Funk**  
**Alexandra Hewett**  
**Emily Karol**  
**Gregory Burgess**

**Jaclyn McGloughlin**  
**Molly Moores**  
**Laura Rocklyn**  
**Caitlin Rogers**  
**Luke Scaros**

## RESIDENT ACTING COMPANY

<b>Tamieka Chavis</b>	<b>Elana Michelle</b>
<b>Anna DiGiovanni</b>	<b>Séamus Miller</b>
<b>Vince Eisenson</b>	<b>Molly Moores</b>
<b>Terrance Fleming</b>	<b>Scott Alan Small</b>
<b>Jose Guzman</b>	<b>Michael P. Sullivan</b>
<b>Ron Heneghan</b>	<b>Gerrad Alex Taylor</b>
<b>Lesley Malin</b>	

## RESIDENT TECHNICAL AND DESIGN COMPANY

<b>Mindy Braden</b>	<b>Michael Lonegro</b>
<b>Alexis E. Davis</b>	<b>Katie McCreary</b>
<b>Lauren Engler</b>	<b>Jessica Rassp</b>
<b>Ruthie Griffith</b>	<b>Chester Stacy</b>
<b>Heather C. Jackson</b>	

## ASSOCIATE MEMBERS

<b>Lizzi Albert</b>	<b>Steven K. Hoochuk</b>
<b>Gregory Atkin</b>	<b>Elliott Kashner</b>
<b>Mike Boynton</b>	<b>Brendan Edward Kennedy</b>
<b>Ian Charles</b>	<b>Briana Manente</b>
<b>Michael Crowley</b>	<b>Frank B. Moorman</b>
<b>Kathryne Daniels</b>	<b>Christopher Niebling</b>
<b>Lauren Davis</b>	<b>JC Payne</b>
<b>Valerie Fenton</b>	<b>Mary Pohlig</b>
<b>Ashly Ruth Fishell</b>	<b>Laura Rocklyn</b>
<b>Kate Forton</b>	<b>Erin Bone Steele</b>
<b>Dave Gamble</b>	<b>Nathan Thomas</b>
<b>Jonas David Grey</b>	

## EMERITUS MEMBERS

<b>Steve Beall</b>	<b>Robby Rose</b>
<b>Blythe Coons</b>	<b>Christina Schlegel</b>
<b>Jenny Crooks</b>	<b>Dave Tabish</b>
<b>Karen Eske</b>	<b>Wayne Willinger</b>
<b>B. J. Gailey</b>	

**Chesapeake Shakespeare Company** creates performances and education programs out of great classic theater. Classic plays can be awfully good, but only if they speak to their audience and the community in a way that is dynamic, personal, and pleasurable. We produce plays that people like and we perform them in innovative and intimate ways that intensify the connection between audiences and artists. We do this because we want to know what makes Shakespeare so great – and we ask our audience and our community to explore that question alongside us. Chesapeake Shakespeare Company is a 501c3 nonprofit organization.

## OLIVE BRANCH LAUREL CROWN

CSC Veterans Ensemble

<b>Jennifer Austin</b>	<b>Matthew Imholte</b>
<b>Christopher Bennett</b>	<b>Sharon Preator</b>
<b>Zach Fellers</b>	<b>Sarah Rodman</b>
<b>David Hanauer</b>	<b>Richard Wirth</b>



**OUR 2019 – 2020 SEASON CONTINUES WITH:**

**WILLIAM SHAKESPEARE'S**  
**HAMLET**

**DIRECTED BY BRENDON FOX**



**WITH VINCE EISENSEN AS PRINCE HAMLET**

**APRIL 17-MAY 10**

**TICKETS ON SALE NOW!**

**ChesapeakeShakespeare.com**  
**410-244-8570**

