

THE **COMPLETE WORKS** OF **WILLIAM SHAKESPEARE** **((abridged)) [revised] [again]**

BY ADAM LONG, DANIEL SINGER, AND JESS WINFIELD
DIRECTED BY IAN GALLANAR



SPONSORED BY  PNC BANK



CHESAPEAKE **SHAKESPEARE** COMPANY

THIS SUMMER THE PLAY'S THE THING REGISTER TODAY FOR SUMMER CAMPS!



The Studio is now offering full-day, week-long, in-person camps for 2023. Each week campers will focus on exciting new themes, while discovering different areas of theatre such as: rehearsal, performance, design, and combat. Three great locations: The Studio at CSC, Baltimore County, and Howard County. Open to students just completing grades 1–8.



For more information visit: ChesShakes.com/Camps

Or Scan the QR code on your mobile device:



THE STUDIO 
AT CHESAPEAKE SHAKESPEARE COMPANY
CLASSES FOR ADULTS, YOUTH, AND VETERANS
No auditions required — just fun!



Lesley Malin

A SEA CHANGE INTO SOMETHING RICH AND STRANGE

A note from CSC's Producing Executive Director

It's a challenging time in the theatre world these days. Here in the Baltimore region, Howard Community College recently announced that it will shut down its award-winning professional theater, Rep Stage. Single Carrot Theatre, the Baltimore ensemble committed to civic engagement through cutting-edge theatre, announced it was closing its doors. We are so sorry to lose these respected sister institutions and salute their leaders for their many years of providing challenging theatre for local audiences.

Here at Chesapeake Shakespeare in our 20th anniversary season, our crackerjack staff is holding the course and our company of artists is growing. Ian and I aren't going anywhere. Our exciting Beyond-The-Walls Initiative is ready to move into its pilot season to bring Shakespeare outside our theatre with our Shakespeare Wagon traveling across the city this summer.

We are committed to improving the quality of the work and increasing the diversity you see on our stage. We are committed to paying our artists more. However, subscriptions across the country are down by 40%. Audiences are down by 25%-35%. There are amazing things happening at CSC right now, but yes, we too are feeling the impact of these national trends.

We were fortunate enough to receive American Rescue Plan funds from the City to cover the cost of Baltimore City public schools to see our school matinee *Romeo and Juliet* this spring. We anticipate busing in 3,000 kids from Title 1 schools to see the show for free—previously, we brought in only half that number at best, so this is a huge and impactful increase.

How can you help? You've already done the best thing . . . you've bought a ticket and you showed up. Thank you! But if you want to help sustain great theatre in our region, post about the show on social media, make a donation, send your kid to one of our fantastic summer camps. Buy a ticket to one of our exciting upcoming productions; this spring's *Hamlet* features beloved CSC company member Vince Eisenson and is helmed by nationally known director, Eleanor Holdridge. Bring a group to The Ruins and enjoy *Macbeth* this summer under a starry Ellicott City sky.

The theatre world is not out of the woods yet, but I promise you, with your help, Chesapeake Shakespeare Company will be around for our next twenty years!

Lesley Malin,
Producing Executive Director



Ian Gallanar

BITING THE HAND THAT FEEDS US?

A Note from CSC's Founding Artistic Director

You know the movie *This is Spinal Tap*? It's a "mockumentary" film made in the early 80's that satirizes heavy metal bands and documentaries about heavy metal bands. It's terribly funny. One of the things that makes it funny is that the filmmakers clearly know the music and have great affection for it. I think you have to have that when it comes to creating satire. Otherwise, it can come across as mean rather than funny. *The Complete Works of William Shakespeare (abridged)* was clearly created with great affection for Shakespeare. Its writers obviously have a passion for his works. Without a certain depth of knowledge about Shakespeare and his works, I'm not sure one would even know about *Titus Andronicus*, let alone be able to parody it.

We do too. We have a passion and affection for Shakespeare (so much so we put the word Shakespeare in our name!) That's why it's been so much fun to work on this production. We try to not take ourselves too seriously—although we try and take the work seriously. So, this is a way for us to share with you the quirkiness and wonderful pretentiousness of Shakespeare and his plays.

The Complete Works of William Shakespeare (abridged) is a classic and this brand new revision has a great appeal to those of us who love Shakespeare, and to those of us, who on occasion, get slightly annoyed with Shakespeare. Sometimes, of course, that can be the same person! Do we find the "Seven Ages of Man" speech to be sublime? Do we think it's beautiful? Check and check. Do we also find the plot devices in Shakespeare's comedies slightly redundant? Also check. That's what this play allows us to do—celebrate Shakespeare and...well, not quite bite the hand that feeds us, but maybe just nibble a bit on that hand.

We've been having great fun playing with the *Complete Works*. I know you will too.

We're glad you're here.

Ian Gallanar,
Founding Artistic Director



CHESAPEAKE SHAKESPEARE COMPANY BOARD OF TRUSTEES

Emily Rockefeller, President
Robin Hough, Vice President
Bill Henry, Treasurer
Lesley Malin, Secretary

Laura Boydston
Kevin G. Burke
Geri Byrd
Joseph Ferlise

Celina Figueroa
Neal Flieger
Ian Gallanar
Scott Helm

Jack McCann
Nora Brigid Monahan
Linda Pieplow
Earle W. Pratt, III

THE **COMPLETE WORKS** OF **WILLIAM SHAKESPEARE** (A LIST)

COMEDIES

All's Well That Ends Well
As You Like It
The Comedy of Errors
Cymbeline
Love's Labour's Lost
Measure for Measure
The Merchant of Venice
The Merry Wives of Windsor
A Midsummer Night's Dream
Much Ado about Nothing
The Taming of the Shrew
The Tempest
Twelfth Night
The Two Gentlemen of Verona
The Two Noble Kinsmen
The Winter's Tale

HISTORIES

Henry IV, Part I
Henry IV, Part II
Henry V
Henry VI, Part I
Henry VI, Part II
Henry VI, Part III
Henry VIII
King John
Pericles
Richard II
Richard III

TRAGEDIES

Antony and Cleopatra
Coriolanus
Hamlet
Julius Caesar
King Lear
Macbeth
Othello
Romeo and Juliet
Timon of Athens
Titus Andronicus
Troilus and Cressida



Congratulations to Founding Artistic Director Ian Gallanar

Chesapeake Shakespeare Company congratulates Founding Artistic Director Ian Gallanar on receiving the 2023 Sandra and Sidney Berger Award from the Shakespeare Theatre Association, given to an Artistic Director in recognition of their outstanding talent and dedication to the works of William Shakespeare.

Ian's passion for Shakespeare and his ability to connect audiences with the works of the Bard have been instrumental in the

company's success. In his 20 years of leadership, Ian has directed over 40 productions for Chesapeake Shakespeare Company and plays a critical role in spearheading the innovative artistic programming for which CSC is known. The Sandra and Sidney Berger award is an international honor. Ian's impact on the Shakespeare theatre community extends far beyond Baltimore. We are so proud of this recognition celebrating the important role Ian plays in the global Shakespeare community.

Chesapeake Shakespeare Company

Ian Gallanar, Founding Artistic Director

Lesley Malin, Producing Executive Director

THE COMPLETE WORKS OF WILLIAM SHAKESPEARE (abridged)[revised][again]

By Adam Long, Daniel Singer and Jess Winfield
Originally produced by Reduced Shakespeare Company

Season Sponsor: PNC

This production is dedicated to the memory of Frank B. Moorman,
a CSC company member since 2003 and our beloved friend.

Director: Ian Gallanar
Stage Manager: Alexis E. Davis
Technical Director: Dan O'Brien
Set Designer: Misha Kachman
Lighting Designer: Katie McCreary
Costume Designer: Kristina Lambdin
Props Designer: Nicolette Le Faye
Sound Designer: Gern Blanton

There will be one 15-minute intermission

CAST

Kathryne Daniels*
Scott Alan Small*
Shaquille Stewart

UNDERSTUDIES

Holly Gibbs
Theodore Sherron III

ARTISTIC AND CREATIVE TEAM

Director	Ian Gallanar*
Production Manager	Sarah Curnoles*
Stage Manager	Alexis E. Davis*
Technical Director	Dan O'Brien*
Set Designer	Misha Kachman
Lighting Designer	Katie McCreary*
Costume Designer	Kristina Lambdin*
Props Designer	Nicolette Le Faye
Sound Designer	Gern Blanton
Assistant Director	Paul Wissman
Assistant Stage Manager	Tyrel Brown
Production Associate	Dawn Thomas Reidy*
Intimacy and Fight Choreographer	Bess Kaye
Scenic Carpenter/Painter, Assistant Technical Director	Chester Stacy*
Wardrobe Supervisor	Ashley Sigmon
Costume Intern	Sarah Krekel
Board Operator	Kristopher Ingle
Covid Safety Manager	Mandy Benedix*
Senior House Manager	Pam Forton*
House Managers	Donna Burke, Abigail Funk, Stacey Morrison, Catherine Ritter, Ellie Skoda

* CSC Company Member

Videotaping, recording, and photography of any kind are prohibited during the performance.

On the Cover: Kathryne Daniels, Scott Alan Small, and Shaquille Stewart. Photo by Keystone Productions

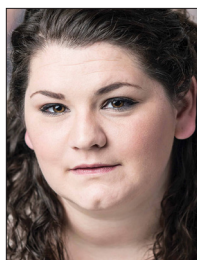
SPECIAL THANKS

CSC Volunteers and Ushers, The Studio at Chesapeake Shakespeare Company, Arrow Parking, Keston DeCoteau, KIRSTIN Pagan Photography, Matthew Smith, Todd Zimmerman, The Washington Post, and Jess Winfield

Originally produced by Reduced Shakespeare Company. The Complete Works of William Shakespeare (abridged) [revised] [again] is produced by special arrangement with Broadway Play Publishing Inc, NYC

Bios

CAST (In alphabetical order)



Kathryn Daniels is a CSC company member and was last seen in CSC's 2022 production of *Twelfth Night* as Maria and the student matinee of *Romeo and Juliet* as the Nurse (2022).

Other CSC credits include: *A Christmas Carol* (2021), *Dracula* (2019), *Measure for Measure* (2020), *Henry IV Parts 1&2* (2019) and *Julius Caesar* (2017). She has also worked with Baltimore Shakespeare Factory, Stillpoint Theater, Iron Crow and Fells Point Theater.



Scott Alan Small is a CSC Company Member since 2004. He has appeared with CSC in 35 productions. He was most recently seen in, *Dracula* (2019); *The Diary of Anne Frank* (2019); *Henry IV, Parts I and II* (2019); *The Winter's Tale* (2018);

The Taming of the Shrew (2017); *Richard III* (2017 and the 2012 movable), *Macbeth* (2016, 2008 (movable), 2007, 2018 student matinee, and 2019 (movable)); *A Christmas Carol* (2017, 2015, 2014). His directing credits with CSC include *A Christmas Carol* (2019, 2017, 2016 and 2015), *The Comedy of Errors* (2015), the movable productions of *Romeo and Juliet* (2016), *Dracula* (2013), and *The Complete Works of William Shakespeare (Abridged)*.



Shaquille Stewart makes his Chesapeake Shakespeare Company debut. Previous credits include *Milima's Tale* (1st Stage), *Macbeth* (PG Shakespeare in the Parks), *Do You Feel Anger* (Theater Alliance) *Tempered* (4615 Theatre Company),

Museum 2040 (4615 Theatre Company) *#Poolparty* (Ally Theatre Company) *Hamlet* (Baltimore Shakespeare Factory) *Midsummer Night's Dream* (Baltimore Shakespeare Factory) *Othello* (National Players, Tour 69).



Holly Gibbs (Understudy) is making her CSC debut. Local credits include: *Richard III* (MD Renaissance Festival), *Perfect Arrangement* (Fells Point Corner Theatre), *Crimes of the Heart* (Vagabond Players), *Romeo & Juliet* and

Love's Labour's Lost (Baltimore Shakespeare Factory), and *The Little Mermaid* (Cockpit-in-Court at CCBC Essex). She holds a BA in Theatre from Goucher College.



Theodore Sherron III (Understudy) returns to CSC after having previously performed in *Richard III* (Buckingham, Duchess of York and others), *Macbeth* (Fleance), and *Love's Labour's Lost* (Forester). He has also been involved in

several performances over at his alma mater UMBC: *Everybody* (Cousin), *Gwyneth* (Luke), and *She Kills Monsters* (Orcus/Ronnie). He is a recent graduate of the University of Maryland Baltimore County with a BFA in Acting.

CREATIVE TEAM

Ian Gallanar (Director) See Leadership Bios on page 10.

Sarah Curnoles (Production Manager) stage managed with CSC for *Much Ado About Nothing*, *The Importance of Being Earnest*, *A Midsummer Night's Dream*, *As You Like It*, *Dracula*, *A Doll's House*, *The Tempest*, and *Henry V*. Before working at CSC, she was self-employed as a life coach. She has also worked at Center Stage as the Executive Assistant to the Artistic and Managing Directors. Sarah created and directed *A Fool's Paradise: 30 Shakespeare Scenes in 60 Minutes* which was performed at the Baltimore Fringe Festival, Edinburgh Fringe Festival, The Kennedy Center's Millennium Stage, and various stages around Baltimore.

Bios

Alexis E. Davis (Stage Manager) was most recently Stage Manager for CSC's 2022 productions of *Twelfth Night* and *A Raisin in the Sun*. Other stage management credits with CSC include: *Dracula*; *Henry IV, Parts 1 & 2*; *She Stoops to Conquer*; *Alice in Wonderland*; *Romeo and Juliet* (student matinees: 2016-2019); *Red Velvet*; *A Christmas Carol* (2017 - 2021); *Julius Caesar*; *The Fantasticks*; and *Othello*; and Assistant Stage Manager for *A Christmas Carol* (2016). Additional credits include Stage Manager for *A Beginner's Guide to Decide and Drunk Enough to Say I Love You* at Single Carrot. Assistant Stage Manager for *By the Way, Meet Vera Stark*; stage crew for *TopDog/Underdog*; and Stage Management Intern for *God of Carnage* with Everyman Theatre. She has also been a Stage Management intern for *Wild! With Happy!* at Baltimore Center Stage. Alexis holds a BA in Theater Production from McDaniel College.

Tyrel Brown (Assistant Stage Manager) His credits include: *Macbeth* (ASM), *Twelfth Night* (Valentine/1st officer), *Julius Caesar* (Fools and Madmen) (Cinna and others), *Young Playwrights Festival* (Baltimore Center Stage) (Ensemble), *Black Super Hero Magic Mama* (Strand Theater) (Tramaron Jackson), *Dreamgirls* (Baltimore Center Stage) (Tiny Joe Dixon and others), *The Comedy of Errors* (Endangered Species Project) (Angelo). Kennedy Center American College Theatre Festival Nominee (Fuente Ovejuna) Education: Towson University, Bachelor of Fine Arts, Acting. IG & TikTok: @tyreltyrelbrown

Misha Kachman (Set Designer) is a scenic and costume designer and studio artist who has worked at Arena Stage, Asolo Repertory Theatre, Baltimore Center Stage, Berkeley Repertory Theatre, Children's Theatre Company of Minneapolis, Cincinnati Playhouse in the Park, Cleveland Playhouse, Court Theatre, The Kennedy Center, Milwaukee Shakespeare, Olney Theatre Center, Opera Lafayette, Opera Royal Versailles, Pasadena Playhouse, Filarmónica de Jalisco/Teatro Degollado, Portland Center Stage, Round House Theatre, Seattle Opera, Seattle Repertory Theatre, Shanghai Dramatic Arts Center, Signature Theatre, Skylight Music Theatre, Studio Theatre, Syracuse Stage, Theater J, Theatre for a New Audience, The Wilma Theater, 59E59 Theatres, and Woolly

Mammoth Theatre Company, among many other companies in the United States and abroad. Misha is a recipient of the 2013 Helen Hayes Award and a Company Member at Woolly Mammoth in Washington, DC, as well as an Associate Artist at Olney Theatre Center. Mr. Kachman has graduated from the St. Petersburg Theatre Arts Academy. He serves as Professor and Head of MFA in Design at University of Maryland. For more information visit www.mishakachman.com.

Kristina Lambdin (Resident Costume Designer & Business Manager) won the Broadway World Best Costume Design award for her designs for *A Christmas Carol* (2016). Some of her costuming credits with CSC include *Dracula* (2013 and 2019); *The Diary of Anne Frank*; *She Stoops to Conquer*; *Alice in Wonderland*; *Red Velvet*; *Anne of the Thousand Days*; *The Fantasticks*; *Macbeth* (2016); *A Christmas Carol* (2014-2018); *A Midsummer Night's Dream* (2005, 2011 and 2014); *The Importance of Being Earnest*; *The Taming of the Shrew* (2006 and 2013); *Romeo and Juliet* (2003, 2012, and student matinees 2015-2019); *A Doll's House*; *As You Like It* (Broadway World Best of Baltimore Award); and *The Country Wife*. Broadway World named her as a top artist of the 2007 Baltimore Theatre, and she won the Greater Baltimore Theater Award for *A Midsummer Night's Dream* (2005). For more than a decade, she served as the Costume Supervisor for the Baltimore Opera Company and then Lyric Opera Baltimore.

Nicolette Le Faye (Props Designer) is a multidisciplinary artist. She made her debut with Chesapeake Shakespeare Company in 2022 as props designer for the *Macbeth* Student Matinee. She is also a costume designer, actor, and dancer who has worked with Charm City Ballet, Towson University, Strand Theatre, Annex Theatre, and others.

Katie McCreary (Lighting Designer) is a company member, and has designed for CSC's *Measure for Measure*, *Romeo & Juliet* (2020), *The Complete Works of William Shakespeare (abridged)* (2020), *The Diary of Anne Frank*; *Henry IV, Parts 1 & 2*; *Alice in Wonderland*; *The Winter's Tale*; *The Fantasticks*; *Anne of the Thousand Days*; *Uncle Vanya*; and *The Importance of Being Earnest*. Other recent and favorite designs include work with Peabody Opera Theater,

Bios

JHU Theater, Rorschach Theatre (company member), Keegan Theater, and Next Stop Theater. Katie is also Director of Development and Curriculum Development for Educational Theatre Company.

Daniel O'Brien (Technical Director & Facilities Manager) is a founding member of CSC. Daniel has performed, designed scenery, lights, and served as Technical Director for many productions (among other jobs too numerous to name). He oversaw the construction of CSC's theatre in Baltimore and designed the sets and lighting for *Macbeth* (2016); for the inaugural season plays *A Midsummer Night's Dream* and *Richard II*; *Romeo and Juliet* (2015-2019); *A Christmas Carol* (2014-2019), and many others.

Dawn Thomas Reidy (Production Associate) is an actor, teaching artist, director, casting director, and puppeteer in the DMV. She is also a new company member at CSC. You may have seen her onstage as the Provost in *Measure for Measure*, Ruth Younger in *A Raisin in the Sun*, or the Exeter in *Henry V*. Dawn received her BFA in Acting from UMBC and her MFA in Acting from IU Bloomington. In the offices Dawn assists in planning, organizing, a facilitating the creation of the CSC's onstage work. When not at CSC, she pretends to have a whole host of illnesses as a standardized patient.

Ashley Sigmon (Wardrobe Supervisor) is an actor, having both experience in film and on stage. Ashley self-taught herself how to sew and attended Baltimore City Community College where she refined her skills and gained valuable knowledge. Ashley first joined CSC as a Dresser for the 2022 *A Christmas Carol* production. Previously she worked in Costume Maintenance for *Joseph and the Amazing Technicolor Dreamcoat* (The Suburban Players at Saint Demetrios Greek Orthodox Church).

Chester Stacy (Scenic Carpenter/Painter, Assistant Technical Director) has designed, built, and painted many CSC productions, including *Alice in Wonderland*, *The Fantasticks*, *Red Velvet*, and *Titus Andronicus*, and for Baltimore Center Stage's *Thoughts of a Colored Man* and *Shakespeare in Love*. Chester Creates LLC, has provided film production design for *The Night Watchmen*, set decoration for *House of Cards* and *The*

Wire; and environmental graphics for *Crunch Fitness*, Royal Caribbean, Bmore Greek Grill, and Healthy Highlandtown.

Paul Wissman (Assistant Director) has worked at numerous theaters around the Baltimore/Washington area as a director and stage manager, as well as actor, designer, and admin. Memorable productions include *The Boys From Syracuse* at Center Stage (Assistant Director), *All That I Will Ever Be* (Assistant Stage Manager) at Studio Theatre, *The Kathy & Mo Show* (Director) at Iron Crow Theatre. He has a bachelor's degree in Theatre Arts from Towson University.

Bess Kaye (Intimacy and Fight Choreographer) is an actor, Fight and Intimacy Choreographer, and dog mom based in DC. This is her fourth show choreographing violence for CSC and her seventh show with CSC overall. She was most recently seen on this stage as Orleáns and Gloucester in *Henry V*. CSC Fight and Intimacy Director Credits: *Macbeth*, Chesapeake Shakespeare Company; *Romeo & Juliet*, Chesapeake Shakespeare Company; *Titus Andronicus*, The Studio Conservatory; *Pericles*, The Academy at STC; *Be More Chill*, Monumental Theatre. Bess is an Advanced Actor Combatant with the Society of American Fight Directors and holds an MFA in Classical Acting from the Shakespeare Theater at GWU. (she/they) thebesskayescenario.com

Thank You

I can no other answer make but thanks.
- Twelfth Night

Season 2022-2023 is presented by



Additional Sponsors and Funders Include



PAUL M. ANGELL
FAMILY FOUNDATION



T.RowePrice
THEATRE COMPANY

CHESAPEAKE
SHAKESPEARE
FOUNDATION, INC.

Education Partners and Acknowledgments

Maryland State Department of Education
Morgan State University
Perry Point VA Medical Center
Steven A. Cohen Military Family Clinic
Elev8 Baltimore

Bios

Adam Long (Co-Author) is the co-creator, co-writer and director of the Reduced Shakespeare Company's *The Complete Works Of William Shakespeare (abridged)*, which ran in London's West End for nine years and was nominated for an Olivier Award. *Complete Works* also ran Off-Broadway twice and continues to enjoy numerous successful tours throughout the world. His feature-length film *The Barn* won The Raindance Award at the British Independent Film Awards. Adam has written for Disney (*Dude That's My Ghost*, *History On Toast* and *Last Minute Book Reports*, PBS (*The Complete Works Of William Shakespeare (abridged)*, Channel Four UK (*Triger Happy TV* and *The Ring Reduced*), BBC Radio Four (*The History Boys Condensed*, *Condensed Histories Of The British Political Parties* and *Home Truths*) and Lucasfilm & BSKyB (*Star Wars Shortened*). Other stage shows include *Dickens Abridged* (The Arts Theatre, London and UK Tour), *Satan Sings Mostly Sondheim* (Jermyn St. Theatre, London), *The Bible: The Complete Word Of God (abridged)* (Reduced Shakespeare), *The Complete History Of America (abridged)* (Reduced Shakespeare), and *Deconstructing Albert* (The Crucible Theatre, Sheffield). Adam also provides the voice of Mr. Small for the BAFTA and Emmy Award winning *The Amazing World of Gumball* (Cartoon Network).

Daniel Singer (Co-Author) has been a theatrical impresario from the moment he looked up the word 'impresario' in the dictionary, founding his first company, General Amazement Theater in Santa Rosa, California, when he was just 18. Upon his return from studying "proper dramatic technique" in London, he became a director at the original Renaissance Pleasure Faire, where he founded the subversive Reduced Shakespeare Company, whose three-man farce *The Complete Works Of William Shakespeare (abridged)* enjoyed a record-breaking run in London's West End and has since become one of the world's most popular comedy shows. In 1989 Daniel hung up his doublet-and-hose to design theme park attractions at Walt Disney Imagineering, where he also co-founded the Flower Street Players, an in-house theater company for Disney employees. Since 2000, Daniel has been a freelance designer, writer, and event producer in Los Angeles. His new hit comedy, *A Perfect Likeness*, chronicles Lewis Carroll's (fictitious) attempt to get his

literary hero Charles Dickens to pose for a photograph in 1866 Oxford. Coming soon to a theater near you!

Jess Winfield (Co-Author) was an original member of the Reduced Shakespeare Company, co-author of *The Complete Works Of William Shakespeare (abridged)*, and performed with the troupe from its founding in 1981 until 1992, when he realized he'd played the title role of *Hamlet* more times than John Gielgud and Laurence Olivier combined and suddenly felt very old. He left the troupe to write and produce animated television for the Walt Disney Company, which made him feel young again — until he'd been there for ten years, at which point he felt old again. He left Disney to write *My Name Is Will — A Novel of Sex, Drugs, and Shakespeare* (Twelve Books). Depicting excessive drug use and promiscuous sex by both a would-be young Shakespeare scholar in the 1980s and the 18-year-old Immortal Bard himself in the 1580s made Jess feel young again; but then he and Daniel Singer revised the *Complete Works* in honor of its 20th anniversary and directed it in the West End, which made him feel old again. He now lives in Hollywood with his wife (and original RSC costume goddess), Sa, and is working on his second novel ... which makes him feel like he's in his forties

LEADERSHIP

Ian Gallanar (Founding Artistic Director, Director of *The Complete Works of William Shakespeare (abridged)* [revised] [again]). In addition to founding the Chesapeake Shakespeare Company in 2002, Ian has worked as a professional actor, director, and writer for more than 150 professional productions during the last 43 years. He has directed over 40 productions for CSC including *Hamlet*, *King Lear*, *Macbeth*, *A Midsummer Night's Dream*, *Richard III*, *Uncle Vanya*, *Romeo and Juliet* and many more. Previously, Ian has served as Artistic Director for the National Theatre for Children, Minnesota Shakespeare in the Park, and the Repertory Theater of America. Ian is a proud member of the distinguished National Theatre Conference and the Dramatists Guild of America; a Helen Hayes Tribute Award, Telly Award, and Howie Award (Howard County Arts Council) winner. He is the recipient of the Distinguished Alumni Award from Indiana University of Pennsylvania, a Past President

Bios

of the international Shakespeare Theatre Association, an organization for professional Shakespeare companies around the globe and a 2023 recipient of their Berger Award, awarded annually to an Artistic Director chosen from Shakespeare companies around the world in recognition of their outstanding talent and dedication to the works of William Shakespeare.

Lesley Malin (Producing Executive Director) is a founder of the Chesapeake Shakespeare Company and has served as its Executive Director since 2003. She managed CSC's building renovation of an 1885 bank into our

modern Shakespeare playhouse as well as the associated \$6.7 million capital campaign. She has performed in 28 CSC productions and previously in New York. She was, for 20 years, Vice President of the Board of Trustees of The Lark, the landmark new play development center in New York City, where she earlier was Managing Director. She served for five years on the Executive Committee of the international Shakespeare Theatre Association and organized its annual conference that CSC hosted in Baltimore in 2017. She is a graduate of Washington University in St. Louis, NYU's Arts Management program, Leadership Howard County, and LEADERship Baltimore (2018).

Artistic Programming, Education, and Operations Donors

A theatre is so much more than a building. It is a living, breathing community where audiences and actors meet to create art that enlightens, inspires, transforms, awes, and entertains. We are grateful for your gifts that support this artistry, our outreach, educational programs, and our operations. This list recognizes gifts of \$250 and greater, received as of January 24, 2022.

The FRIENDS of Chesapeake Shakespeare Company

Benefactor (\$5,000+)

Anonymous
Youse Cather
Lara Cheikh and Firmin DeBrabander
The Flieger Family
Scott Helm and Lesley Malin/
The Helm Foundation
Robert and Gladys Helm
Eva P. Higgins
Pam and Sam Himmelrich, Jr.
Robin and Don Hough
Charlton and Patrick + Hughes
Jeanne E. Marsh
Bob and Deeley Middleton
Mary and James Miller
Mr. Earle Pratt and Dr. Kelly Emerson
Jeffrey Reilly
Emily Rockefeller
Wally and Brenda Stone
Paul and Chandler Tagliabue, in
honor of Emily Rockefeller
David Warnock and Michele
Speaks
Mary Jo and Ted Wiese

Patron (\$2,500-\$4,999)

Mohamed Al-Ibrahim and Sallie
Rixey
Jeff and Carolyn Crooks
John C. Eisner and Jennifer Dorr
White
Edward and Nanci Feltham
Joseph Ferlise and Barry Carter
Celina Figueroa
Rubby Hearn, in honor of Katherine
Kelly
Bill and Ruth Henry
Chris and Mary Ellen Kiehne
Jenny and Jay Leopold
Mr. Richard W. Ley
Jack and Donna McCann
Rev. Patricia Payne
Linda and Jeff Pieplow
Penny Thompson and Charlie Riesz
Charlest and Mary Jo Wagandt

Friend (\$1,000-\$2,499)

Anonymous (6)
Anonymous, in memory of Barry
Neal Ochrach
Isabelle Anderson
Dr. Murry Bentley and Ms. Linda
J. Clark
Heidi and Steven Berman
Laura Boydston
Mr. and Mrs. A. Stanley Brager, Jr.
Kevin G. and Susan A. Burke
Geri Byrd
Brad and Sonia Byrnes
Virginia Tyler Campbell
Robert Connors and Jonas
David Grey
The Courtesan
Chris and Mary Alane Downs
Jane Eisner
Bruce and Lisa Field
Kevin and Sherry Frick
Dennis J. Gallagher
Ian Gallanar and Maria Trujillo +
Frank Gannon
Jesse and Carol Gardner
Judith Golding and Rob Brager
Glen R. Goodwin and Dr. Jennifer
Cooper
Marie Hartman
Dana Johns
Terry Morgenthaler and Patrick
Kerins
Dr. and Mrs. Stephen Malin
Janet and Tom McGlynn
Quentin McKennis
Chris and Sarah Meyers
Nora Bridgid Monahan
Frank B. + Mary Ellen
Moorman
Kevin and Joyce Parks
Walter and Mary-Ann Pinkard
Mark and Joanne Pollak
Robert E. Prince
Erin and Steven Prumo
Kyoko and Steve Redd
Lillian Sparks Robinson
Carlos + Kate Rodriguez
Sharon and Michael Runge
Drs. Bradley L.
and Christina N. Schlagger
Mary Ann and Chuck Scully

Clair Zamoiski Segal
Scott and Sharon Stewart, CE
Science Inc.
Holly and George Stone
John R. Sult
Julie Suman and Mark Toohey
John and Susan Warshawsky
Alicia Wilson
Joe and Valerie Yingling

Player (\$500-\$999)

Anonymous (7)
Anonymous, in memory of Jed and
Grace Tucker
Dr. Michael Ankrum and Mr. F.
William Chickering
The Babji Family
Tauren Robinson El Bey
Jonathan Bicknell
Pamela H. Bilger
Don and Patricia Black
Brock Boston
Robert Brennan
Sherilyn Brinkley and Jeff Brotman
Ana Harbom and Shawn Budge
Bob Burke and Helen Blumberg
Glenn and Sandy Campbell
Dr. Martha J. Connolly
Ann Ottewill and Dr. J. Stephen
Cunat
Ernie and Linda Czzyryca
Yvette Diamond
Jonathan Dubin
Jim Eisner
Mary and George Evering
John Fischel
Donna and Joe Flynn
Pamela S. Forton
Jeanette Glose
Carole and Scott Greenhaus
Ben Greenwald
Jose Guzman
Eric Hansmann and Cheryl Torsney
Ernie and Diana Hawk
Rabbi Joanne and Dr. Gary Heiligman
Frank Henegehan, in honor of Helen
Henegehan
Mark A. G. Huffman
Marc and Caroline Hurwitz
Matthew Imholte
Nick and Cynthia Islin

Erica Johnson
Anna Katz
Kevin Kenny
Tim and Jennifer Kingston
Jennifer Little
Tom and Fran Lonegro
Brigit and Alan Macksey
Ganesha Martin
Emily McMahon
Steven Mook
Mark A Nook
Professor Megan Olsen and
Professor Tim Wood
Nancy and Tom O'Neil
Paul and Jenny Oxborough
Frederick N. Pearson
Keven Perkins and Christine
Bordine
Thomas Queeney
Charles Wheatley and Kimberly
Reeves
Kevin and Jennifer Renshaw
Alice, Fern, and Riley Reed
Susan Shaner and John Roberts
Nan Rohrer
Michael Rosenbaum and Amy
Kiesel
Brian Saylor
Henry Schvey
Steve and Kelly Schwenk
James Seidl
Michael Shaw
F. Louise and Wayne F. Smith
Carolan and Brian Stansky
Doris S. Sweet
Andrew Tagliabue and Mark Jones,
in honor of Emily Rockefeller
Curtis Tatum
Tanya Terrell
Michael Terrin and Bess Keller
Mark Tolson
Khanh Uong
Marguerite VillaSanta and the Dr.
Frank C. Marino Foundation, Inc.
Vittulo Family
Susan Walther
Jay Rood and Jeffrey Watkins
Kem and Susan White
Dave Whitmore
† Deceased

Corporate, Foundation, and Government Support

\$100,000+

The Helm Foundation
Maryland Department of
Commerce
Maryland State Arts Council
(MSAC)
U.S. Small Business
Administration

\$25,000–\$99,999

Paul M. Angell Family
Foundation
City of Baltimore
Baltimore Civic Fund
Maryland State Department
of Education (MSDE)
PNC Bank

\$10,000–\$24,999

The William G. Baker,
Jr. Memorial Fund,
creator of the Baker
Artist Portfolios, www.
Bakerartist.org
Baltimore County
Commission on Arts and
Sciences and the Citizens
of Baltimore County
The Jacob and Hilda
Blaustein Foundation
Charles A. Brooks and
Anna Cloyde Brooks
Foundation, through the
PNC Charitable Trusts
Grant Review Committee
Howard County Arts
Council, through a grant

from Howard County
Government
Howard County Government
The John J. Leidy
Foundation
The M&T Charitable
Foundation
T. Rowe Price Foundation

\$5,000–\$9,999

Baltimore Heritage Area
Association
J. S. Plank and D. M. DiCarlo
Family Foundation
Morris A. and Clarisse Mechanic
Foundation
MileOne Autogroup
The Nora Roberts Foundation

\$100–\$4,999

Baltimore Community
Foundation
Mayor Brandon M. Scott and the
Baltimore Office of Promotion
and the Arts
Carroll County Arts Council
The Macht Philanthropic Fund of
The Associated
The Sylvia Meisenberg
Endowment for Shakespeare
Education
PayPal Giving Fund
Renaissance Charitable
Foundation Inc.
Shapiro Sher Guinot and Sandler
Southway Builders, Inc.
Take Two Software

Individual Donors

Mechanicals

Jean Brune
Donna Burke and Dava Sentz
Janet Curnoles
Deborah Ford
Pamela Forton
Jefferson and Olivia Gray
Adam Hill and Mary Naylor
Mark Huffman
Hannah Jones
Michele Massa
Morgan Nebistinsky
Andrew and Stephanie
Pappas
Keven Perkins and Christine
Bordine
Scott and Megan Rodgville
Brian and Barbara Scheetz
Chelsea and Matthew
Wernsdorfer
Jennifer Wright and Josh
Osborne

\$250 – \$499

Anonymous (6)
Nicole Ballietto
Leslie and Hugh Bethell
Susan Betso and Carol Clark
Douglas Blackstone and
Judith Krummeck
David Bobart
Lasteria Boyle

David Brown
Jean Waller Brune
Donna Lee Burke
Jeffrey and Elaine Christ
Jane Coffey and
Arthur Renkwitz
Emried and Wandaleen Cole
David Cooke
Georgette Csobaji
Lize Davis
Edwin N. Dean, Jr.
Michele DeMusis and John
Campbell
Bruce and Lindsay Fleming
Deborah Ford
Brian Gamble
Jefferson M. Gray
Caroline Griffin and Henry E.
Dugan, Jr.
Jim and Susan Hade
Susan Hahn
Oz Heiligman
Ralph and Beth Heimlich
Mary Parker and Adam Hill
Dr. and Mrs. Wayne Hunt
Brita Jenquin
Corinne Keet and Aaron
Burstein
Michael Lasinski
Jill and Aaron Levin
Alison and Laddie Levy
Michael Loneygro
Peter Lucas

Alice Ludington
Judy and David Mauriello
Sid Mazumdar
Amy McClain
Wade and Nancy Meadows
Dave and Fran Gunther
Minges
David Mintzer and Cinda
Hughes
Molly Moores
Morgan and
Michael Nebistinsky
David Nyberg
Wells and Mary Obrecht
Colm O'Comartun
Thomas L. and Leslie V. Owsley
Andrew Pappas
William and Nancy Paternotte
Mr. Samuel M. Peters and Dr.
Suzanne Hurst
Susan H. Pratt
Caroline Queale
Luke Randolph
Keenan and Natasha Rice
Sarah S. Robinson
Kathleen Roso
Sam Rudy
Al Russell
Brian and Barbara Scheetz
Mary Shock
Sophia Silbergeld
Janet Simons
Mr. and Mrs. David Smith

Erin Steele, Colin Steele
Michael P. and Joanna Sullivan
Sabrina Thornton
Lorraine and Leon † Ukens
Louise Wagner
Susan M. Watts
Maria J. Wawer
Topper and Ellen Webb
Justin Williams
Paul Wright
Jenny Wright and Josh
Osborne
Kristina Zilli

† Deceased

Matching Gift and Employee Giving Programs

Booz Allen Hamilton
Brown Advisory
Maryland Charity Campaign
The Robert Wood Johnson
Foundation
T. Rowe Price Program for
Charitable Giving
Stanley Black & Decker

In-Kind Support

Bach in Baltimore
Eddie's of Roland Park
Shriver Hall Concert Series

REMEMBERING FRANK B. MOORMAN



Frank B. Moorman, born March 22, 1949, passed away on October 27, 2022. He earned his BA in Theater from Middlebury College and a master's degree in French Literature from Trinity College. Frank was an active member of the theatre community. He served as President of Colonial Players and was a founding member of the Chesapeake Shakespeare Company. At CSC he was an audience favorite for twenty years, performing many roles including King Lear, Cyrano de Bergerac, Friar Lawrence, Oberon, and himself in our 2011 production of *The Complete Works of William Shakespeare (abridged)*.

Chesapeake Shakespeare Company benefited greatly from Frank's talent and decades of contribution to the company. He was smart, kind, collegial and loved being part of CSC. He will truly be missed.

CHESAPEAKE SHAKESPEARE COMPANY

LEADERSHIP

Ian Gallanar, Founding Artistic Director
Lesley Malin, Producing Executive Director

STAFF

Sarah Curnoles, Production Manager
Brian D. Lyles, Director of Development
Brandon W. Vernon, Marketing Director & Resident Graphic Designer
Michael Lonegro, Director of Operations & Finance
Dan O'Brien, Technical Director & Facilities Manager
Chester Stacy, Assistant Technical Director & Facilities Associate
Ron Heneghan, Director of Education
Troy Jennings, Education Manager
Jalen Lee, Communications Manager
Catharine Helmers, Grants & Institutional Giving Manager
Kristina Lambdin, Business Manager & Resident Costume Designer
Mandy Benedix, Box Office Manager
Mickaëlle (Emme) Gudino, Box Office Assistant
Pamela Forton, Senior House Manager
Dawn Thomas Reidy, Production Associate
Miranda Solomon, Marketing & Development Associate

2022-2024 ARTISTIC COMPANY

Greta Boeringer	Steven Hoochuk
Ian Charles	DeJeanette Horne
Tamieka Chavis	Brendan Edward Kennedy
Jonas Connors-Grey	Briana Manente
Michael Crowley	Katie McCreary
Kathryne Daniels	Elana Michelle
Alexis E. Davis	Séamus Miller
Lauren Davis	Grace Srinivasan
Terrance Fleming	B'Jion Wright

THE TOUCHSTONE COMPANY

Company members who have served the organization for many years with particular dedication and loyalty.

Lizzi Albert	Russell Laury †
Isabelle Anderson	Molly Moores
Steve Beall	Frank B. Moorman †
Mindy Braden	Christopher Niebling
Gregory Burgess	Laura Rocklyn
Kevin Costa	Scott Alan Small
Vince Eisenson	Erin Bone Steele
Lauren Engler	Michael P. Sullivan
Valerie Fenton	Gerrad Alex Taylor
Ashly Ruth Fishell	Nathan Thomas
Kate Forton	Jean Thompson
Dave Gamble	Wayne Willinger
Jose Guzman	† Deceased

BLACK CLASSICAL ACTING ENSEMBLE

Deimoni Brewington	Jamie Mann
Zipporah Brown	Bethany Mayo
Tyrel Brown	Elana Michelle
Tina Burkhalter	Shaquan Pearson
Tamieka Chavis	Adrienne Powell
Lloyd Ekpe	Gerrad Alex Taylor
Torreke Evans	Dawn Thomas Reidy
Lauren Davis	Mecca Verdell
James Gallmon	Quincy Vicks
Dominic Gladden	B'Jion Wright
Megan Livingston	

OLIVE BRANCH AND LAUREL CROWN VETERANS ENSEMBLE

Christopher Bennett	Matt Melenas
Brian Caelleigh	Sharon Preator
Zach Fellers	Gary Pullen
David Hanauer	Richard Wirth
Matthew Imholte	

TEACHING ARTISTS

Molly Horton Booth	Jeff Miller
Tina Burkhalter	Séamus Miller
Keegan Cassidy	Molly Moores
Kathryne Daniels	Laura Rocklyn
George Michael Harris	Caitlin Rogers
Isaiah Mason Harvey	Laura L. Sligh
Ron Heneghan	Gerrad Alex Taylor
Casey Kaleba	Quincy Vicks
Emily Karol	Elissa Wolf
Jenny Male	

Founded in 2002, **Chesapeake Shakespeare Company** is the leading classical theatre company in Maryland, offering vibrant performances that blow the dust off Shakespeare and delight its patrons. One of the six largest theatre companies in the state, CSC serves diverse audiences with funny, moving, rousing mainstage seasons, a vigorous education program that serves over 16,000 students annually in both theatre and the classroom, and a growing community engagement effort including a model Veterans program and the Black Classical Acting Ensemble.

The Chesapeake Shakespeare Company has three venues. Its indoor performances are presented at the stunning, award-winning 266-seat Chesapeake Shakespeare Company Theatre, with a thrust stage uniquely designed for CSC performances. Next door to the theatre and linked are its administrative offices and The Studio at the Chesapeake Shakespeare Company, which serves as a classroom, rehearsal space, and alternative performance area. CSC's summertime outdoor home is in nearby Ellicott City and features performances and education programming at the PFI Historic Park, a gorgeous spot for picnicking and watching Shakespeare under the stars.





Bach in Baltimore

T. Herbert Dimmock, Founder & Music Director



Join Us for Our 35th ANNIVERSARY SEASON

presenting

live, monthly concert events from the
Baroque and Beyond through June 2023!

BACH PAIRING NO. 2

FEBRUARY 12, 2023

Bach Brandenburg Concerto No. 4
Bach Cantata 184

ADMISSION: \$33 Online | \$35 Door
St. Joseph Parish | 100 Church Lane

MUSICAL LIONS:

BACH, HANDEL & MOZART

MARCH 5, 2023

Bach Cantata 112
Handel *Water Music* Suite No. 1
Mozart Bassoon Concerto in B flat

ADMISSION: \$33 Online | \$35 Door
First Evangelical Lutheran Church
3604 Chatham Road

BACH ST. JOHN PASSION

APRIL 2, 2023

Celebrate Bach in Baltimore's 35th
Anniversary with a Bach masterpiece!
*Join us for a Silent Auction and
Free Cocktail Reception following
the concert.*

ADMISSION: \$40 Online and Door
Church of the Resurrection
11525 Greenspring Avenue

DYNAMIC ORGAN & BRASS:

SAINT-SAËNS & GABRIELI

APRIL 16, 2023

Saint-Saëns Symphony No. 3 in C Minor
(for Organ & Brass)

Gabrieli Polychoral Brass Extravaganza

ADMISSION: \$33 Online | \$35 Door
Church of the Redeemer | 5603 N. Charles Street

BRILLIANT BACH TRIO

May 7, 2023

Bach Oboe Concerto in D Minor, Mvmt II
Bach Cantatas 140 & 4

ADMISSION: \$33 Online | \$35 Door
Center for the Arts | 3400 Norman Avenue

COPLAND AND MOZART

MAY 21, 2023

Copland *Appalachian Spring*
Mozart Clarinet Concerto in A Major

ADMISSION: \$33 Online | \$35 Door
Church of the Redeemer | 5603 N. Charles Street

MUSIC OF TITANS:

HANDEL & MOZART

JUNE 4, 2023

Handel *Dettingen Te Deum*
Mozart Symphony No. 41 in C Major, "Jupiter"

ADMISSION: \$33 Online | \$35 Door
First Evangelical Lutheran Church
3604 Chatham Road

All performances begin at 4:00 p.m.

For tickets and information, visit **bachinbaltimore.org** or call **410.941.9262**.

(In-person, live-streaming, and on-demand options available)

Bach in Baltimore is supported in part by grants from the Maryland State Arts Council, William G. Baker, Jr. Memorial Fund, Harford County Cultural Arts Board, Howard County Arts Council, Howard County, Paul M. Angell Family Foundation, Baltimore Office of Promotion and The Arts, Citizens of Baltimore County, Peggy & Yale Gordon Trust, Lois & Philip Macht Family Philanthropic Fund, Dr. Frank C. Marino Foundation, Ensign C. Markland Kelly, Jr. Memorial Foundation, BCF Mitzvah Fund, and the Wolman Family Foundation.

*“...good company,
good wine, good
welcome can make
good people.”*

-William Shakespeare



EDDIE'S OF ROLAND PARK
5113 ROLAND AVENUE | 410.323.3656

Good Wine. Prime Meats. Gourmet Foods. Local Flavor.

Eddie's
OF ROLAND PARK

SUNDAYS @ 5:30PM

FEB 26

DOVER QUARTET

JOSEPH CONYERS DOUBLE BASS

MAR 26

TETZLAFF-TETZLAFF-DÖRKEN
TRIO

APR 23

PIOTR ANDERSZEWSKI PIANO

MAY 14

IMANI WINDS

**"BALTIMORE'S FINEST
IMPORTER OF CLASSICAL
MUSIC TALENT."**

-THE SUN



Tetzlaff-Tetzlaff-Dörken Trio

ShriverHallConcertSeries

SHRIVERCONCERTS.ORG 410.516.7164

GET YOUR TICKETS TODAY!

DON'T MISS THE CELEBRATION
OUR 20TH ANNIVERSARY SEASON CONTINUES WITH:

WILLIAM SHAKESPEARE'S
HAMLET

DIRECTED BY ELEANOR HOLDRIDGE



APRIL 28 — MAY 21

TICKETS NOW ON SALE!