

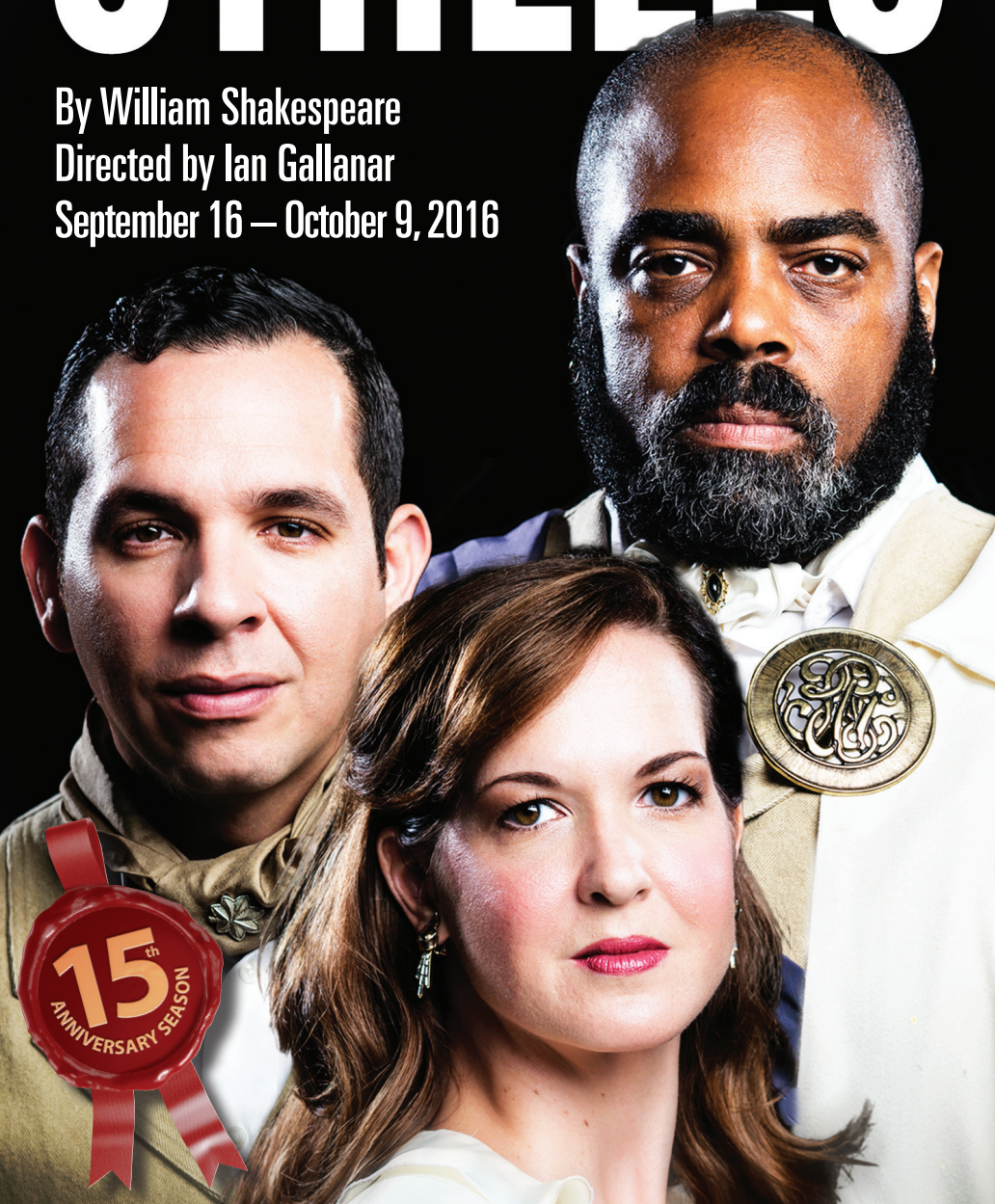
CHESAPEAKE**SHAKESPEARE**COMPANY

# OTHELLO

By William Shakespeare

Directed by Ian Gallanar

September 16 — October 9, 2016





Ian Gallanar. Photo by Theatre Consultants Collaborative Inc.

# The Perils of Isolation

## A Note from the Founding Artistic Director

This play, *Othello*, is different from the 25 other Shakespeare plays we have produced since 2002. Unlike his plays that are set in tightly woven communities, *Othello* depends so much more on isolation – physical isolation as well as isolation of thought. The action moves from the metropolis of Venice to the island of

Cyprus, where we spend most of our time in the play. On Cyprus is a castle, a fortress where Othello is himself isolated—he has no family other than his new wife. He has no fellow countrymen. There is only his army to protect him in his isolation. After Othello, Iago, Desdemona, Emilia, and Roderigo have arrived in Cyprus, they have nothing to do but prey upon one another.

Isolation enables many of the play's most important effects: Iago frequently speaks in soliloquies; Othello stands apart while Iago talks with Cassio in Act IV, scene I; Roderigo seems attached to no one in the play except Iago. And, most prominently, Othello is visibly isolated from the other characters by his physical stature and the color of his skin.

Iago, an expert at manipulating emotion and environment, knows exactly how to use this isolation to his benefit.

The characters fall because they are isolated, the play seems to say. That is unique among Shakespeare's plays, and it is the source of the sadness that exists in the community of the play.

If only they had communicated more. If only there were more people around to tell them the truth... But, no, Othello (and Roderigo, for that matter) are too isolated for that.

  
Ian Gallanar

Founding Artistic Director and Director of *Othello*



### BOARD OF TRUSTEES

**Earle W. Pratt, III** *President* | **Robin Hough** *Vice President* | **Scott Helm** *Treasurer*

**Laura Boydston**  
**Kevin G. Burke**  
**Kimberly Citizen**

**Ian Gallanar**  
**Bill Henry**  
**Jack McCann**

**Lesley Malin**  
**Dan Moylan**  
**Linda Pieplow**

**Sean Rhoderick**  
**Emily Rockefeller**  
**Nan Rohrer**



Lesley Malin. Photo by  
Teresa Castracane.

# Bringing *Othello* to Our World

## A Note from CSC's Managing Director

A few years ago, Chesapeake Shakespeare Company produced *The Merchant of Venice*. We deliberately decided not to highlight or focus on the anti-Semitism in the play. We didn't discuss it in the program or our marketing materials and offered only one (very thoughtful) post-show discussion of those issues. And some patrons were outspokenly distressed and surprised by this omission.

So once we had chosen to perform *Othello*, Shakespeare's only play with a hero of color – a tragedy about an honorable black man manipulated into killing his wife, a white woman – we wanted to ensure we were creating a fuller picture of that story and offering additional perspectives for our community. Once we made that commitment, the community outreach programming we call *The World of Othello* quickly took shape.

The first event was held prior to opening in partnership with The Walters Art Museum. An enthusiastic audience enjoyed a reading of the award-winning new play *Red Velvet* by Lolita Chakrabarti, directed by Shirley Basfield Dunlap, who is an Associate Professor and Coordinator of Theatre Arts at Morgan State University. CSC and other artists shared the story of the 19th-century African-American actor Ira Aldridge and his groundbreaking portrayal of Othello in London. A gallery talk followed, with the audience visiting the museum's 1827 portrait of the Victorian superstar.

At the Baltimore Book Festival on September 24th, CSC actors will read Nobel laureate Toni Morrison's lyrical play *Desdemona*, which gives the women of *Othello* new voices and new words.

We also have pre- and post-show events scheduled. Dr. Ayanna Thompson, Professor of English at George Washington University and a specialist on race in theatre performance, will speak on September 17th; this community conversation is called *Renaissance, Race and Othello Today*. Our actors will talk about their experiences on September 29 and October 6. And we will have two daytime student matinees that we hope will allow young people to wrestle with the many questions *Othello* raises.

At the Chesapeake Shakespeare Company, we believe that Shakespeare is for everyone; we also understand that everyone doesn't see the play through the same window of experience. *Othello* is a complex play that raises issues about race, gender, evil, and isolation. By bringing this play to life in our theatre and by exploring some of these issues in the larger community through *The World of Othello*, we hope we will be able to reach more of "everyone." Thanks for joining us in that world – what questions do you have?

Lesley Malin  
Managing Director

**Chesapeake Shakespeare Company**  
Ian Gallanar+ Founding Artistic Director  
Lesley Malin+ Managing Director

# OTHELLO

**By William Shakespeare**  
**Directed by Ian Gallanar+**  
**Technical Director: Daniel O'Brien+**  
**Costume Designer: Jacy Barber**  
**Production Manager: Patrick Kilpatrick+**  
**Stage Manager: Alexis E. Davis**

**Setting: Venice and Cyprus**

## CAST

OTHELLO, general of the Venetian forces and a Moor.....Jason B. McIntosh\*  
DESDEMONA, Othello's new wife ..... Diane Curley+  
IAGO, Othello's ensign and third-in-command..... Jose Guzman+  
EMILIA, Iago's wife and attendant to Desdemona ..... Briana Manente  
CASSIO, Othello's lieutenant .....Alex Miletich IV  
DUKE OF VENICE .....Stephen Lopez  
BRABANTIO, a Venetian senator and father of Desdemona.....Jeff Keogh+  
GRATIANO, brother to Brabantio ..... James Jager+  
LODOVICO, Desdemona's cousin .....Stephen Lopez  
RODERIGO, a Venetian gentleman in love with Desdemona .....Elliott Kashner  
BIANCA, a courtesan, in love with Cassio..... Bethany Mayo+  
MONTANO, Governor of Cyprus .....Jeff Keogh+  
CLOWN.....Bethany Mayo+  
FIRST OFFICER.....Briana Manente  
FIRST SENATOR.....Briana Manente  
THIRD SENATOR .....James Jager+

### **SPECIAL THANKS:** CSC's volunteers and ushers; Bin 604; Arrow Parking;

Todd M. Zimmerman Design; Mount Royal Printing Co.; Folger Shakespeare Library; Lolita Chakrabarti; Tricycle Theatre; St. Ann's Warehouse; Dr. Julia Marciari-Alexander, Alexander Jarman, Jo Briggs, and Mona M. Rock at The Walters Art Museum; Shirley Basfield Dunlap (SDC) and the cast and crew of *Red Velvet*; Ayanna Thompson, Ph.D.; Ty Hallmark and the cast and crew of *Desdemona*; Summer Cullen, The Baltimore Book Festival, and The Baltimore Office of Promotion and The Arts; Washington National Opera, Adelle Gresock, Jannette J. Witmyer, Sandra Maddox Barton.

THERE WILL BE ONE 15-MINUTE INTERMISSION

On the cover: Jason B. McIntosh\*, Diane Curley +, and Jose Guzman+  
Photo by Teresa Castracane+

## ARTISTIC AND PRODUCTION STAFF

Director ..... Ian Gallanar+  
 Production Manager ..... Patrick Kilpatrick+  
 Stage Manager ..... Alexis E. Davis+  
 Technical Director, Lighting Designer, Scenic Designer ..... Daniel O'Brien+  
 Costume, Hair, Wig and Makeup Designer ..... Jacy Barber  
 Props Designer ..... Jess Rassp  
 Sound Designer ..... Ian Gallanar+  
 Music Director ..... James Jager+  
 Fight Choreographer ..... Chris Niebling+  
 Fight Captain ..... Stephen Lopez  
 Dramaturg ..... Kathryn M. Moncrief  
 Assistant Director ..... Gerrad Alex Taylor+  
 Assistant Stage Manager ..... Kate Forton+  
 Wardrobe Crew ..... Mindy Braden+  
 Light Board Operator ..... Michael Lonegro+  
 Sound Board Operator ..... Gali Miller  
 House Managers ..... Pamela Forton, Tyler C. Groton, Alice Stanley  
 Volunteer Coordinator ..... Sara Small

\*The Actor appears through the courtesy of Actors' Equity Association, the Union of Professional Actors and Stage Managers in the United States.

+CSC Company Member

# Thank You

*High sparks of honor in  
 thee have I seen.* - Richard II

## Funders



This production has been funded by  
 Mayor Stephanie Rawlings-Blake and  
 the Baltimore Office of Promotion and The Arts

MARYLAND STATE  
 ARTS COUNCIL



## Media Partners







Oct. 21 - Nov. 13, 2016

## ANNE OF THE THOUSAND DAYS

BY MAXWELL ANDERSON DIRECTED BY KASI CAMPBELL

TICKETS: [ChesapeakeShakespeare.com](http://ChesapeakeShakespeare.com) 410.244.8570

*Designing Women: Lights. Sound. Set. Costume. Dance.*

Meet ANNE's all-women production design team.

Saturday, October 29, 2016 6:30pm - 7:30pm (pre-show)

*Anne Boleyn: Seductive Temptress or  
Religious and Political Changemaker?*

A Community Conversation with Prof. Amy M. Froide

Saturday, November 5, 2016 6:30pm - 7:30pm (pre-show)

# Who's Who

CAST PHOTOS, in alphabetical order



Diane  
Curley+



Jose  
Guzman+



James  
Jager+



Elliott  
Kashner



Jeff Keogh+



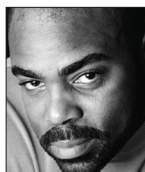
Stephen  
Lopez



Briana  
Manente



Bethany  
Mayo+



Jason B.  
McIntosh\*



Alex  
Miletich IV

\*The Actor appears through the courtesy of Actors' Equity Association, the Union of Professional Actors and Stage Managers in the United States.

+CSC Company Member

Make our style  
**Your Style**



COMPLIMENTARY  
SUBSCRIPTION

COURTESY OF  
**Chesapeake Shakespeare Company**



BALTIMORE  
**STYLE**

VISIT **BALTIMORESTYLE.COM/EVENT**  
OR CALL **410.902.2300**

# Bios

## CAST, in alphabetical order

**Diane Curley** (Desdemona) has appeared with CSC as Hero in *Much Ado About Nothing*. Favorite roles include Irish Classical Theatre Company's *Cat on a Hot Tin Roof* (Maggie), *Fallen Angels* (Julia), and *The Liar* (Clarice); Kavanoky Theatre's *Blithe Spirit* (Elvira); BUA's *Avow* (Irene); MusicalFare's *Music Man* (Ethel); and with Road Less Travelled's *Clybourne Park* in her Artie Award-winning performance (Betsy/Lindsey). She holds a BA in Theatre from U.C. San Diego and trained with San Francisco's A.C.T., California Shakespeare Theater, and the British American Drama Academy.

**Jose Guzman** (Iago) is a CSC Resident Acting Company Member. He has appeared with CSC in *Macbeth*, *Much Ado About Nothing*, *The Taming of the Shrew*, *The Two Gentlemen of Verona*, *Titus Andronicus*, and *Julius Caesar*, among many others. He worked with Lean and Hungry Theater on a Spanish-infused adaptation of *The Taming of the Shrew* and with GALA Theatre's *Ana*

*in the Tropics*. Jose holds an MA in Theatre from Binghamton University.

**James Jager** (Gratiano, Music Director) is a CSC Resident Acting Company Member. He has performed in CSC's *Titus Andronicus* (2015), *Much Ado About Nothing*, *Romeo and Juliet*, *A Christmas Carol*, *Richard II*, *A Midsummer Night's Dream*, *As You Like It*, *The Taming of the Shrew*, *The Two Gentlemen of Verona*, *Titus Andronicus* (2010), and *Hamlet*, among many others. He is a Society of American Fight Directors' recognized Advanced Actor/Combatant, and he was Fight Consultant on the Helen Hayes Award-winning *Three Musketeers* at Syntetic Theater.

**Elliot Kashner** (Roderigo) appeared with CSC in *Wild Oats* (Lamp) and *Romeo and Juliet* (Benvolio). Other recent credits include *Lovecraft: Nightmare Suite*, *Nightfall* with *Edgar Allan Poe*, and *The Margins* with Molotov Theatre Group; *Light of Night* with Venus Theatre; and *The Tempest* with Annapolis Shakespeare Company. He has also worked with Signature Theatre, Keegan Theatre, WSC Avant Bard, 1st Stage, Adventure Theatre, and Scena Theatre, among others. He holds a BS in Economics from George Mason University. [www.ElliottKashner.com](http://www.ElliottKashner.com)

**Jeff Keogh** (Brabantio, Montano) is a CSC Resident Acting Company Member. He has appeared with CSC in *Macbeth*, *Much Ado About Nothing*, *Antony and Cleopatra*, *Hamlet* (school tour), *The Merry Wives of Windsor*, *As You Like It*, *A Midsummer Night's Dream* (2014), and *Romeo and Juliet* (2014). Additional credits include *Macbeth* and *Hamlet* with Round Table Theatre Company and *Mary Stuart* at the Folger Theatre. He holds an MFA in Classical Acting from Shakespeare Theatre Company's Academy for Classical Acting.

**Stephen Lopez** (Lodovico, Duke, Fight Captain) appeared with CSC in *The Three Musketeers* and is an alumnus of the CSC High School Corps. Other credits include





# Bios

*Fuzzy Pete* at the Passage Theater. He holds a BFA in Acting from Adelphi University.

**Briana Manente** (Emilia, First Officer, First Senator) has appeared with Theatre Prometheus in *[All-Lady] Macbeth* (*First Witch*); NuSass Productions in *Stone Tape Party*; Brave Spirits Theatre in *Henri IV: the Re-Gendered Henry IV Repertory* (*Hotspur, Coleville, Mouldy, Clarence*); *Shakespeare in the Parks*: Prince Georges County in *Romeo and Juliet* (*Mercutio*); *Blood & Courage*, the CSC Under-30 Company in *All's Well that Ends Well* (*Countess, Mariana*). She holds an MFA from the Catholic University of America and is an Artistic Associate of Brave Spirits Theatre. [www.brianamanente.com](http://www.brianamanente.com).

**Bethany Mayo** (Bianca, Clown) is making her performance debut with CSC. She was the Assistant Stage Manager for last season's *Titus Andronicus* and is a CSC Teaching Artist. She holds a degree in Musical Theater from William Woods University, Fulton, MO.

**Jason B. McIntosh** (Othello) is making his CSC debut. His regional credits include *When January Feels Like Summer* with Mosaic Theater Company; *Ruined* and *Fences* with Everyman Theatre; *Superior Donuts*, *Jerry Springer: The Opera*, and *Fucking A* with Studio Theatre; *The Constellation* with Active Cultures; *Master Harold...and the Boys* with Quotidian Theatre Company. Film credits include *Killing Kennedy*. He also has several regional voice-over credits. He studied at Shakespeare Theatre Company's Academy for Classical Acting at George Washington University and is an alumnus of the Studio Theatre Acting Conservatory. He is a proud member of Actors' Equity. [www.jasonbmcintosh.com](http://www.jasonbmcintosh.com)

**Alex Miletich IV** (Cassio) is making his CSC debut. He has appeared with Molotov Theatre Group in *Blood, Sweat, and Fear*; Convergence Theatre in *At What Cost* (Collaborator) and *Bhavi the Avenger*; Burke Theater in *Swingtime the Musical*; Flashpoint DC in *A*

*Roadkill Opera*; as a soloist with the Kennedy Center in *An Evening with Barbara Cook*; with the Symphony Orchestra of Northern Virginia in *Les Miserables*; with the National Portrait Gallery in *Measure of Our Lives*; and with Faction of Fools in *Tales of Courage and Poultry*. He holds a degree in Theatre from the University of Maryland, College Park.

## ARTISTIC and TECHNICAL CREW and PRODUCTION STAFF

**Ian Gallanar** (Director, Sound Designer, Founding Artistic Director) In addition to founding the Chesapeake Shakespeare Company in 2002, Ian has worked as a professional actor, director and writer for more than 150 professional productions. His career as a professional Artistic Director spans more than 25 years. His directing credits with CSC include productions of *Wild Oats*, *Titus Andronicus*, *A Christmas Carol* (original adaptation, 2014, 2015), *Romeo and Juliet* (2015, 2003), *Uncle Vanya* (2015), *Twelfth Night* (2002), *A Midsummer Night's Dream* (2007), *Lysistrata* (original adaptation, 2010), *Our Town* (2011), *Richard III* (2012), *The Taming of the Shrew* (2013), and *The Merry Wives of Windsor* (2014). Ian created the "movable" format for CSC productions in which audiences travel with the actors through the action of the play in multiple outdoor settings. With CSC's Education Department, he created the



TERESA CASTRACANE  
PHOTOGRAPHY



**CSC's Resident Photographer**  
also offering Headshots for Actors  
Executive Portraits  
Photography of Children & Families  
[TeresaCastracane.com](http://TeresaCastracane.com)

# Bios

CSC High School Corps, a unique educational program in which high school students create and produce live productions of Shakespeare in a collaborative working environment. Last year, he launched CSC's Blood & Courage company to provide experience for early career professionals. Previously, Ian has served as Artistic Director for the National Theatre for Children, Minnesota Shakespeare in the Park and the Repertory Theater of America. Ian is a proud new member of the distinguished National Theatre Conference; a Helen Hayes Tribute Award, Telly Award and Howie Award (Howard County Arts Council) winner; and the recipient of the Distinguished Alumni Award from Indiana University of Pennsylvania.

**Lesley Malin** (Managing Director) is a founder of the Chesapeake Shakespeare Company and has served as its Managing Director since 2003. She managed CSC's building renovation of an 1885 bank into our modern Shakespeare playhouse as well as the associated \$6.7 million capital campaign. Her acting credits at CSC include Lady Macbeth, Amelia in *Wild Oats*, Lady Bracknell, Mrs. Fezziwig, Beatrice (2010), Mrs. Bennet, Mistress Page in *The Merry Wives of Windsor*, the Queens in *Richard III* and *Cymbeline*, and Titania (2005); previously, she performed in New York. She has, for over a decade, been the Vice President of the board of trustees of The Lark, a new play development center in New York City, where she once served as Managing Director. She has been Vice President of and is presently on the executive committee of the international Shakespeare Theatre Association and is organizing its 2017 conference to be held in Baltimore. She is a graduate of Washington University in St. Louis, NYU's Arts Management program, and Leadership Howard County.

**Jacy Barber** (Costume Designer) is a theatrical artist specializing in costume, puppet, and object/properties design. She has designed for CSC's *Titus Andronicus* and *Wild Oats*. Jacy has designed world premiere productions for The Kennedy Center (KCTYA), The Welders, Field Trip Theatre,

Contradiction Dance, Ballet ADI, A Broken Umbrella Theatre, QTIP, AndHow!, and Fred Ho. She co-founded D.C.-based Not A Robot Theatre Co., whose original production of *The Clocks* (Capital Fringe 2013) earned the festival's Director's Award. She holds a BA in Costume Design/Puppetry from Sarah Lawrence College and an MS from Antioch University New England.

**Elizabeth Berman** (Finance Manager, Development Manager) has a Master of Arts degree in Arts Administration from Goucher College and two bachelor's degrees from Johns Hopkins University. Liz is a classically trained musician who teaches at The Music Institute at HCC. She has been at CSC since 2012.

**Kelly Martin Broderick** (Audience Services Manager) is finishing a Bachelor's degree at the University of Maryland, Baltimore County, in Gender and Women's Studies. Kelly is a visual artist whose work was included in "*Ordinary Woman*," a show at the Howard County Center for the Arts. She has been with CSC since 2014.

**Alexis E. Davis** (Stage Manager) was Stage Manager for CSC's *Romeo and Juliet* (2016). With Everyman Theatre, she was Assistant Stage Manager for *By the Way, Meet Vera Stark* and Stage Management Intern for *Topdog, Underdog* and *God of Carnage*. With Single Carrot Theatre, she was Stage Manager for *A Beginner's Guide to Decide*. She also was a Stage Management Intern at Center Stage. She holds a Bachelor's degree in Theater Production with a Film Production minor from McDaniel College (class 2012).

**Kate Forton** (Assistant Stage Manager, Singer) is a CSC Associate Company Member and Marketing and Administrative Assistant. She appeared as Marian and Mrs. Dilber in *A Christmas Carol* (2015), as a Goth in *Titus Andronicus*, and as Duke Solinus in *The Comedy of Errors*. She was Stage Manager for CSC's movable production of *Romeo and Juliet*, and Assistant Stage Manager for CSC's *The*

# Bios

*Three Musketeers, Macbeth, Wild Oats, Much Ado About Nothing, The Importance of Being Earnest, A Midsummer Night's Dream, Antony and Cleopatra, The Taming of the Shrew, Uncle Vanya, A Christmas Carol, and Romeo and Juliet.* In addition, she has been a Dance Captain, ensemble member, and singer for many CSC productions. She holds a BA in Theatre Arts and Vocal Music from Gettysburg College.

**Ron Heneghan** (Director of Community Engagement) is the administrator of CSC community programs, school matinees, in-school residencies, and summer camp offerings in Baltimore City and Howard County. He is also a CSC Resident Acting Company member. A native of Maryland and a proud resident of Baltimore, he received his undergraduate degree from the University of Maryland and holds an MFA from University of Washington.

**Patrick Kilpatrick** (Production Manager, Director of Programming) is a founding member of CSC. Patrick directed the CSC productions of *As You Like It, The Two Gentlemen of Verona, The Tempest, The Taming of the Shrew, and Troilus and Cressida*. He has appeared onstage in *Richard II* and numerous other CSC productions. He has choreographed fights for *Macbeth* and many other CSC productions and has been the Production Manager for every show since January 2010.

**Kristina Lambdin** (CSC Resident Costume Designer, CSC Business Manager). Some of her costuming credits include CSC's *Macbeth, A Christmas Carol* (2015, 2014), *A Midsummer Night's Dream* (2014, 2011, and 2005, and winning the Greater Baltimore Theater Award for the 2005 production); *The Importance of Being Earnest; The Taming of the Shrew* (2006 and 2013 productions); *Romeo and Juliet* (2003, 2012, 2015 and 2016 productions); *A Doll's House; As You Like It* (Broadway World Best of Baltimore Award); and *The Country Wife*. Broadway World named her as a top artist of the 2007 Baltimore Theatre. For more than a decade, she served as the Costume

Supervisor for the Baltimore Opera Company and then Lyric Opera Baltimore.

**Russell Laury** (Porter) Before joining CSC, Russell worked with Southway Builders on the transformation of our landmark building into this beautiful theater.

**Michael Longro** (Light Board Operator, Development Assistant) has operated lights for CSC's *A Midsummer Night's Dream, A Christmas Carol* (2015, 2014), *Uncle Vanya, The Importance of Being Earnest, Romeo and Juliet, and Macbeth*.

**Laura Malkus** (Development Director) previously served as Director of Annual Giving at Roland Park Country School, and prior to that served as the coordinator for its record-breaking \$25 million capital campaign. In her personal time, Laura is a performer and writer.

**Kathryn Moncrief** (Dramaturg) was the dramaturg for CSC's *Wild Oats*, and Textual Advisor for *King Lear* with Elements Theatre Company; she appeared as Gwen in *Rapture, Blister, Burn* with nexStage Theatre. She is Professor and Chair of English at Washington College in Chestertown, MD. She is co-editor of *Shakespeare Expressed: Page, Stage and Classroom in Early Modern Drama; Performing Pedagogy in Early Modern England; Performing Maternity in Early Modern England*; and *Shakespeare's Life and Times* for the Internet Shakespeare Editions, and is author of *Competitive Figure Skating for Girls*. She holds a Ph.D. in English from University of Iowa and an MA in English and Theatre from University of Nebraska.

**Liz Nelson** (Marketing and Public Relations Assistant, Box Office Associate) has worked with theatre companies in Charleston, SC; Berkeley, CA; and Monmouth, ME. She studied sound design at Plymouth State University.

**Chris Niebling** is the Co-Artistic Director of Live Action Theatre, and a CSC Company

# Bios

Member. He is a graduate of Oberlin College, a certified Advanced Actor/Combatant and a member of The Society of American Fight Directors. He has worked as an actor, director, and/or fight choreographer with numerous regional theatres including CSC, for *Romeo and Juliet*, *Wild Oats*, and *Titus Andronicus*; with Catalyst Theatre Company, The Hatchery Festival, Journeyman Theatre, Pallas Theatre Collective, Red Eye Gravy, Rep Stage, Rorschach Theatre, Solas Nua, Washington Shakespeare Company, Alvernia College, and Carroll Community College. Chris also teaches stage combat workshops in and around the Baltimore/Washington area.

**Jess Rassp** (Props Designer) has worked on sets and costumes with CSC. Also, she designed *Midlife* and *Year of the Rooster* for Single Carrot Theatre. She holds a degree in English Literature from Brandeis University.

**Robby Rose** (Production and Education Assistant) is a CSC Company Member. He was Production Manager for CSC's Blood & Courage company productions of *All's Well That Ends Wells* and *Unscene*. He has appeared in CSC's *Much Ado About Nothing*, *The Comedy of Errors*, *Richard II*, *A Midsummer Night's Dream* (2014 and 2011), *Dracula*, *Romeo and Juliet* (2015 and 2014), *Pride and Prejudice*, *Cymbeline*, *Hamlet*, and *Twelfth Night*. Additional credits include *The Diary of Anne Frank*, *Six Degrees of Separation*, *The Battle of Shallowford*, and *The Busie Body*.

**Sara Small** (Volunteer Coordinator) recruits and oversees the many volunteers and ushers who assist during productions.

**Scott Alan Small** is a CSC Associate Artistic Director, Resident Acting Company member, and Concessions Czar. He has appeared in CSC's *Macbeth*, *Much Ado About Nothing*, *Uncle Vanya*, *A Christmas Carol* (2015, 2014), *A Midsummer Night's Dream* (2014), *The Merry Wives of Windsor*, *Julius Caesar*, *Titus Andronicus*, *Measure for Measure*, *Richard III*, *The Country Wife*, *A*

*Doll's House*, and *The Front Page*. His directing credits include CSC's *A Christmas Carol* (2015), *The Comedy of Errors*, the movable productions of *Romeo and Juliet* (2016) and *Dracula*, and *The Complete Works of William Shakespeare: Abridged*.

**Chester Stacy** (Scenic Painter) of Chester Creates LLC has done set design, construction and scene painting for several CSC productions, including *Macbeth*, *Much Ado About Nothing*, *Titus Andronicus*, *Uncle Vanya* and *The Importance of Being Earnest*; and for Red Branch Theatre's *Bring It On the Musical*; and First Baptist Church of Glenarden's *The Uncut Coming of Christ*. His projects have included set decoration for *House of Cards*; display graphics and installation for Howard County Library, Mill No. 1, Long Reach Village Center, and Pax River Naval Air Station; sculpture fabrication for the AVAM Kinetic Sculpture Race; and production design for Eduardo Sanchez's *The Night Watchmen*.

**Gerrad Alex Taylor** (Assistant Director) is a CSC Resident Acting Company Member and Associate Artistic Director. He appeared as Aramis in CSC's *The Three Musketeers*, Malcolm in *Macbeth*, Claudio in *Much Ado About Nothing*, Mercutio (2016) and Romeo (2014) in CSC's productions of *Romeo and Juliet* for schools, and Young Scrooge in *A Christmas Carol* (2014). He appeared as Petruchio in *The Taming of the Shrew* with Pallas Theatre Collective, The Host in *The Merry Wives of Windsor* at The Great River Shakespeare Festival, and Proteus in *The Two Gentlemen of Verona* at the Shakespeare Festival St. Louis. He holds a BA in Neuroscience from The Johns Hopkins University and an MFA in Performance from the University of Nevada, Las Vegas.

**Jean Thompson** (Communications Manager) is our marketing, public relations, and publications director. A former news reporter and features editor, she has worked for *The Baltimore Sun*, *The New York Times*, *American Style*, and *Giftware News* magazine.



# Artistic Programming, Education, and Operations Donors

A theater is so much more than a building. It is a living, breathing community where audiences and actors meet to create art that enlightens, inspires, transforms, awes, and entertains. We are grateful for your gifts that support this artistry, our outreach and education programs, and our operations. This list recognizes gifts of \$100 and greater, received as of September 9, 2016.

## The FRIENDS of Chesapeake Shakespeare Company

### Benefactor (\$5,000+)

C. Sylvia and Eddie C. Brown  
Robert and Gladys Helm  
Scott Helm  
Pam and Sam  
Himmelrich, Jr.  
Richard Ley  
Lesley Malin  
Mary and James Miller  
Emily and John D. Rockefeller, V  
Paul and Debby Silber  
Chip and Rhona Wendler  
Ted and Mary Jo Wiese

### Patron (\$2,500+)

The Flieger Family  
Jennifer Hearn  
Cynthia and Nick Islin  
The Sylvia Meisenberg Endowment for Shakespeare Education and the Meisenberg Family  
Bob and Deeley Middleton  
Walter and Brenda Stone  
Paul J. and Chandler M. Tagliabue, *in honor of Emily Rockefeller*

### Friend (\$1,000+)

Anonymous (4)

Laura Boydston and Robin Suleiman  
Kevin and Susan Burke  
Virginia Tyler Campbell  
Yara Cheikh and Firmin DeBrabander  
Kimberly Citizen  
Jane Coffey and Arthur Renkowitz  
Jeffrey and Carolyn Crooks  
Dana DiCarlo and Scott Plank  
John C. Eisner and Jennifer Dorr White  
Ian Gallanar and Maria Trujillo  
Judith Golding and Robert Brager  
Ruby and Robert Hearn  
Robin and Don Hough  
Chris and Mary Ellen Kiehne  
Bob Lienhardt and Barbara Leons  
Stephen and Joanne Malin  
Vivian and Robert Manekin  
Jack and Donna McCann  
Thomas and Janet McGlynn  
Frank and Mary Ellen Moorman

Dan and Heidi Moylan  
Dr. and Mrs. Stephen M. Oppenheimer  
Jeff and Linda Pieplow  
Walter and Mary-Ann Pinkard  
John and Carrie Pirie  
Earle W. Pratt III and Kelly Emerson  
Robert Prince  
Sean Rhoderick and Ana Kornegay  
Keenan and Natasha Rice  
Nan Rohrer  
Sharon and Michael Runge  
Scott and Sharon Stewart, CE Science Inc.  
Michael P. and Joanna Sullivan  
Wittenberg-Bonavoglia Family

### Player (\$500-\$999)

Anonymous  
Michael and Teri Bennett  
Dr. Murry Bentley and Ms. Linda Clark  
Sherilyn Brinkley and Jeffrey Brotman  
Barbara and Edward Brody

Ernie and Linda Czryca  
The Epp Family  
Bruce and Lindsay Fleming  
David and Barbara Gamble  
Glen R. Goodwin and Dr. Jennifer L. Cooper  
Carole and Scott Greenhaus  
Heneghan Family Fund  
Eva Higgins  
George Higgins  
George and JoAnn Holback  
Mark A. G. Huffman  
Kathryn Elizabeth Kelly  
Tim and Jennifer Kingston  
Wade and Nancy Meadows  
Kevin and Joyce Parks  
Carmel M. Roques and Steven D. Beall  
Mr. and Mrs. David Sawitzki  
George C. and Holly G. Stone  
Dr. Cheryl Torsney and Eric 'E-Mann' Hansmann  
Alice Tracy  
Marguerite Villasanta

## Individual Donors

### \$250+

George and Julia Alderman  
Charlie and Kathy Beach  
Mr. and Mrs. A. Stanley Brager, Jr.  
Donna Burke  
Robert Burke and Helen Blumberg  
Joseph and Meredith Callanan  
Hacky Clark and Peter Dubeau  
Dr. Martha J. Connolly  
The Doctrow Family Fund  
Mary Alane Downs and Christopher P. Downs  
Steve Duffy  
Howard and Beth Eisenson, *in honor of Vince Eisenson and Amal Saade*

Bruce Field  
The Fletcher-Hill Family  
Laura Freitag  
Barry Linkner  
Jeanne Marsh  
Daniel and Patricia Medinger  
Joan Myers, *in honor of Mary Myers*  
Paul and Jenny Oxborough  
Mr. and Mrs. David B. Shapiro  
Chip Smith and Cheryl Bernard-Smith  
Andrew Tagliabue, *in honor of Emily Rockefeller*  
Michael L. Terrin and Bess Keller  
Mr. and Mrs. Jay M. Wilson  
Matt and Sarah Wilson

Jenny Wright and Josh Osborne  
Dr. Susan Ziemann  
  
**\$100+**  
Anonymous (4)  
Anne Agee  
Paul and Irene Aldridge  
Clifford Amend  
Matthew and Ann Ansel  
Kathleen Barber and Barry Feinstein  
Elizabeth and Ira Berman  
Dave Bobart  
Patricia Howland Bond  
Linda Boyd  
Joan K. Braden  
Jack and Ann Breihan, *in honor of Margaret Breihan*

Jennifer Burdock, *in honor of Tony Tsendeas*  
Joan Castellán  
Pat and David Chason  
Jeffrey and Elaine Christ  
Lee Conderacci  
Dale Connelly  
David and Sara Cooke  
Kristen and Mike Cooper  
Janet M. Curnoles  
The Curtis Family  
Roger and Brenda Cutter  
Dinorah Dalmasy  
Jim and Suzanne Davis  
Patricia L. Delk-Mercer and Raymond Mercer  
Michele DeMusis and John Campbell  
Martin Disney

## Individual Donors, continued

Valerie Fenton and Christopher Niebling  
Mr. and Mrs. William A. Feustle  
Dr. Esther Fleischmann and Dr. Peter Griffith  
Pamela S. Forton and Kate Forton  
Mike and Anne Foss  
R. James Fritsch  
Jacquelyn Galke  
Dennis Gallagher and Carol Barthel  
Mrs. Jane R. Geuder  
Mr. and Mrs. Santo Grande  
Sue Griffey and John Otting  
Mr. and Mrs. Bill Heneghan  
Frank Heneghan, *in honor of Helen Heneghan*  
Ron Heneghan  
Kathy Hogue and Nick Sommes  
Katharine Hudson and Gregory Scott Otto  
The Iverson Family  
Mike and Connie Jack  
Patricia Jonas  
David and Melora Kaplan  
Eric and Hattie Katkow  
Stephen and Linda Kelly, *in honor of Kathryn Kelly*  
The Klipp-Lischner Family  
Menalcus and Valerie Lankford, and the Baltimore Dickens Society  
James Macdonald  
Kristen Mahoney  
Frank Mancino  
Michael and Lucia Martin  
Audrey Maynard  
Steven and Mary McKay  
Suzan and Alex Mecinski  
The Meloy Family  
Arianna Miceli  
Dr. Tara Muscovich  
Janet and Douglas Neilson  
Rhonda and Paul Nowacek  
Margaret M. Obrecht  
Lynne O'Brien and Roger Mitchell  
Lee and Marilyn Ogburn  
Marc Okrand  
Yvonne Ottaviano  
Bodil Bang Ottesen  
Andrew Pappas  
James Passarelli  
Dorie Passen and Jason Dougherty  
Rebecca S. Pearlman  
Helene and Bob Pittler  
Mark and Joanne Pollak  
Mickey and Marian Raup  
Hazel Rectanus  
Paula and Charles Rees  
Pat and Stasia Reynolds, *in honor of William R. Stott, Jr.*  
Nicole Ripken and Family  
Samuel Rogers  
Charles and Deborah Rutherford  
Mary Ann and Chuck Scully  
Clair Zamoiski Segal  
Herbert and Susan Shankroff  
Judy Sheldon and Chris Gorman  
Sharon Silverman and Marc Hamburger  
Jan and Jack Simons

Ed Simpson  
Diane Six  
Mary Soules  
The Stansbury Family  
Brian and Carolan Stansky  
Paul and Amy Stone  
Margaret L. Sullivan  
William Sweet  
David and Irene Tabish  
Leon and Lorraine Ukens  
The Velapoldi Family  
Mitch, Mary, Melanie, and Danielle Vitullo  
Susan Watson  
John and Marie Wells  
Sandra Welty and Michael James  
D. Kemater White, Jr.  
Lisa Wilde and Philip Vilardo  
Dale and Vince Wilding  
Judy Wixted and George Dappert  
Beverly Winter, *in memory of Jackson B. Winter*  
Carol and Ron Zielke  
Anne Marie Zwycewicz and Dennis Pitta

### In Memory Of Nicholas Delaney, CSC Resident Musician and Friend

Anonymous (2)  
Mary Bailey  
John and Lorna Delaney  
Brenda Fogarty  
Pamela and Kate Forton  
Friends of Nick Delaney  
Friends of Nick Delaney from Ytsejam.com  
The Hockenberry Family  
Michael and Cassandra King  
Erin Loeliger  
Linda Mattive  
David Rubin  
Sharon and Michael Runge

### CORPORATE, FOUNDATION, AND GOVERNMENT SUPPORT

The Allegis Group  
AmazonSmile Foundation  
The Arts Insurance Program, LLC  
The William G. Baker, Jr. Memorial Fund, creator of the Baker Artist Awards, [www.bakerartistawards.org](http://www.bakerartistawards.org)  
Baltimore City Foundation and Baltimore City Council President Jack Young  
Baltimore National Heritage Area  
Mayor Stephanie Rawlings-Blake and the Baltimore Office of Promotion and the Arts  
BGE  
Brown Capital Management  
The Brenda Brown-Lipitz Family Foundation, Inc.  
The Campbell Foundation  
CGA Capital

Community Foundation of Howard County  
The Helm Foundation  
Howard County Arts Council, through a grant from Howard County Government  
The John J. Leidy Foundation  
The M&T Charitable Foundation  
Macy's Foundation  
Dr. Frank C. Marino Foundation Inc.  
Maryland State Arts Council  
The Morris A. Mechanic Foundation  
The Sylvia Meisenberg Endowment for Shakespeare Education

Peter's Pour House  
PNC Foundation  
Powell Recovery Center  
The Sheridan Foundation  
United Way of the National Capital Area  
The Venable Foundation

### IN-KIND SUPPORT

Bin 604  
Alan J. Fink and J. Wynn Rousuck  
Kelly Keenan and Jason Trumbour  
Ober | Kaler  
Otterbein Cookies  
Mary Jo Tydlacka  
Maryland Public Television  
The Wine Bin



# What makes Shakespeare so great?

-Our FRIENDS do.

Please consider becoming a Friend of CSC.

More information at [chesapeake-shakespeare.com](http://chesapeake-shakespeare.com)

# CHESAPEAKE SHAKESPEARE COMPANY

## STAFF

**Ian Gallanar**, Founding Artistic Director  
**Lesley Malin**, Managing Director  
**Patrick Kilpatrick**, Director of Programming  
**Laura Malkus**, Director of Development  
**Elizabeth Berman**, Finance and Development Manager  
**Jean Thompson**, Communications Manager  
**Daniel O'Brien**, Technical Director/Facilities Manager  
**Ron Heneghan**, Director of Community Engagement  
**Kevin Costa**, Education Director  
**Kristina Lambdin**, Resident Costume Designer and Business Manager  
**Kelly Martin Broderick**, Audience Services Manager  
**Elizabeth Nelson**, Marketing and Public Relations Assistant, Box Office Associate  
**Michael Lonegro**, Development Assistant  
**Robby Rose**, Production and Education Assistant  
**Russell Laury**, Porter  
**Kate Forton**, Marketing and Administrative Assistant  
**Sara Small**, Volunteer Coordinator  
**Scott Alan Small**, Concessions Czar

## OUR CREATIVE MEDIA TEAM

**Sandra Maddox Barton**, Todd M. Zimmerman,  
**Bridget Parlato**, Graphic Design  
**Teresa Castracane**, Photography  
**Leap Day Media**, Program Advertising

## ASSOCIATE ARTISTIC DIRECTORS:

**Lizzi Albert**  
**Scott Alan Small**  
**Gerrad Alex Taylor**

## RESIDENT ARTISTS

**Isabelle Anderson**, Distinguished Artist in Residence  
**Nellie K. Glover**, Resident Choreographer  
**Scott Farquhar**, Resident Musical Director  
**Teresa Castracane**, Resident Text Coach

## TEACHING ARTISTS

Keegan Cassady	Bethany Mayo
Blythe Coons	Jeff Miller
Vince Eisenson	Molly Moores
Bobby Henneberg	Laura Rocklyn
Emily Karol	Emily Sucher
Jeff Keogh	Gerrad Alex Taylor

## RESIDENT ACTING COMPANY

Lizzi Albert	Jose Guzman	Jeff Keogh	Scott Alan Small
Gregory Burgess	Ron Heneghan	Lesley Malin	Michael P. Sullivan
Vince Eisenson	James Jager	Molly Moores	Gerrad Alex Taylor

## RESIDENT TECHNICAL AND DESIGN COMPANY

Mindy Braden	Heather C. Jackson
Teresa Castracane	Kristina Lambdin
Sarah Curnoles	Michael Lonegro
Alexis E. Davis	Sandra Maddox Barton
Lauren Engler	Mary Hoffman Pohlig
Scott Farquhar	Daniel O'Brien
Nellie K. Glover	Chester Stacy
Ruthie Griffith	Haley Raines Young

## CSC ENSEMBLE

Matthew Ancarrow	Frank B. Moorman
Kecia A. Campbell	Jack Novak
Diane Curley	Kelsey Painter
Dave Gamble	Laura Rocklyn
Elana Michelle	Robby Rose

## ASSOCIATE MEMBERS

Jeannie Anderson	Katie Keddell
Steve Beall	Jenny Leopold
Mike Boynton	Frank Mancino
Keegan Cassady	Michele Massa
Tamieka Chavis	Bethany Mayo
Jenny Crooks	Séamus Miller
Blythe Coons	Tami Moon
Karen Eske	Christopher Niebling
Valerie Fenton	Christina Schlegel
Kate Forton	Erin Bone Steele
Ashly Ruth Fishell	David Tabish
B.J. Gailey	Nathan Thomas
Kate Graham	Wayne Willinger
Scott Graham	Shannon Listol Wilson
Ty Hallmark	

The **Chesapeake Shakespeare Company** creates performances and education programs out of great classic theater. Classic plays can be awfully good, but only if they speak to their audience and the community in a way that is dynamic, personal, and pleasurable. We do plays that people like and we perform them in innovative and intimate ways that intensify the connection between audiences and artists. We do this because we want to know what makes Shakespeare so great — and we ask our audience and our community to explore that question alongside us. Chesapeake Shakespeare Company is a 501c3 nonprofit organization.

## Chesapeake Shakespeare Company

7 South Calvert Street, Baltimore, MD 21202

Office: 410-244-8571

Box Office: 410-244-8570

[www.ChesapeakeShakespeare.com](http://www.ChesapeakeShakespeare.com)



**ASCAP**



**CHESAPEAKE  
SHAKESPEARE  
COMPANY**

15th Anniversary Season  
All shows are on sale now.  
Save up to 20%. Subscribe today.

**OTHELLO**

September 16 - October 9, 2016

**ANNE OF THE THOUSAND DAYS**

October 21 - November 13, 2016

**RICHARD III**

February 10 - March 5, 2017

**THE TAMING OF THE SHREW**

March 17 - April 9, 2017

**THE FANTASTICKS**

April 21 - May 21, 2017

**THE TEMPEST**

June 16 - July 23, 2017

OUTDOOR SHOW  
IN-THE-RUINS  
at PFI HISTORIC PARK

**A CHRISTMAS CAROL**

December 2 - 23, 2016

SUBSCRIBERS ENJOY AN  
EARLYBIRD  
DISCOUNT

